

Community Center/Senior Center Design Team meeting

May 2, 2017 1:00 p.m.

Newtown Senior Center Riverside Road

---

Present: Rusty Malik, Kevin McFarland (Quisenberry/Arcari); Marilyn Place (Senior Center Director); Pat Llodra (First Selectman); Advisory Committee: Anna Wiedemann, Barbara Bloom, Lereine Frampton. One member of the press, Kendra Bobowick of the Newtown Bee.

Architects Malik and McFarland began the meeting with an overview of recommendations for programming and space allocation (attached). Discussions among the participants led to several suggestions for modifications: 1) create a covered patio or terrace tucked in on the south-west side, and 2) relocate the multi-purpose rooms to connect with that patio area. These suggestions were considered very favorably by the group, pointing out the enhanced opportunity for indoor/outdoor activity and greater use of the multi-purpose spaces. Discussions about parking affirmed that bus drop-off and turn around will be accommodated at the entrance to the center; attention will be paid, also, to the design of the senior parking areas in order to avoid steps and elevations as much as possible. The center will have a dedicated entrance, a service/prep kitchen, two arts/crafts room, a dedicated space for exercise, a small retail location for the sale of senior-made goods, and classrooms. Dedicated storage will be created to serve each function. Proposed for the lobby entrance is comfortable seating and maybe a fireplace. There is a need for up-to-date technology that provides for ease of video-projection. Further, spaces identified for meetings, lectures, book-club activity, and that sort – should be wired with hearing assist loops to better accommodate persons with audio challenges. The architects discussed at length the interior spaces and related programming; described the relationship of those spaces to the community center rooms; and illustrated access from the senior center hallway through to the aquatics component and rooms beyond.

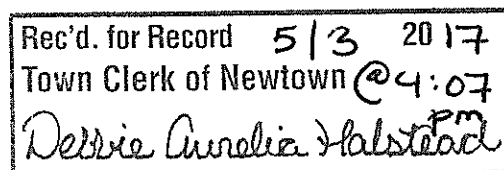
Discussion about exterior spaces again affirmed the desirability of the proposed location on the west side of the community center building. In addition to the covered patio, bocce courts would be an attractive and useful outdoor element. An interest in connecting to Nunnawauk Meadows via a walkway was discussed. That option will be explored for future consideration.

The design team will present its recommendation to the BoS sometime soon after May 15. It is anticipated that one final meeting with the senior center advisory group will occur before the BoS presentation.

The document describing the roles and tasks of the advisory groups, and others involved with the community center/senior center was distributed for members to consider and react to.

Meeting adjourned 2:25 .

E. Patricia Llodra





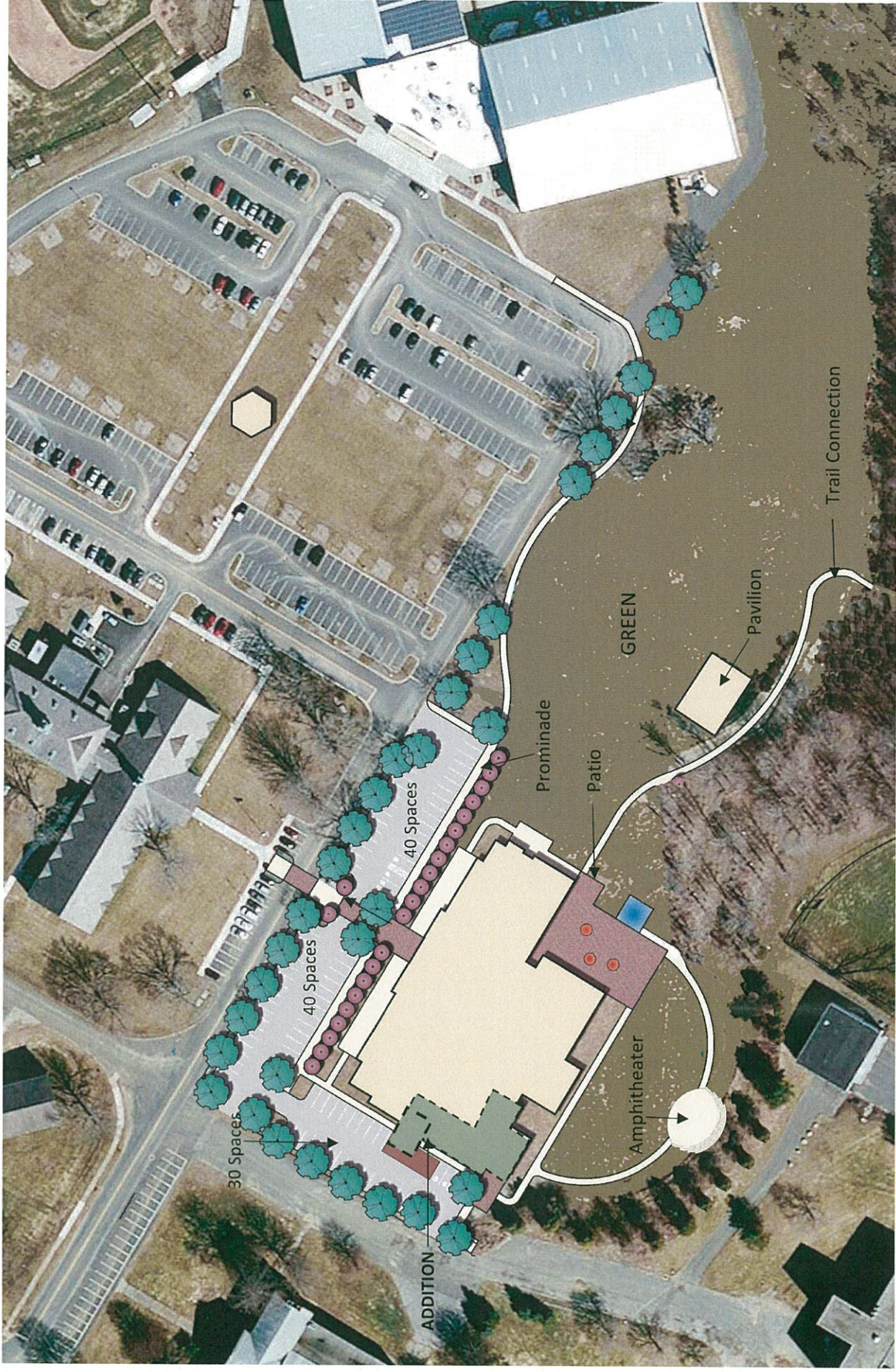


Status Update  
April 28, 2017

# NEWTOWN COMMUNITY CENTER







# NEWTOWN COMMUNITY CENTER

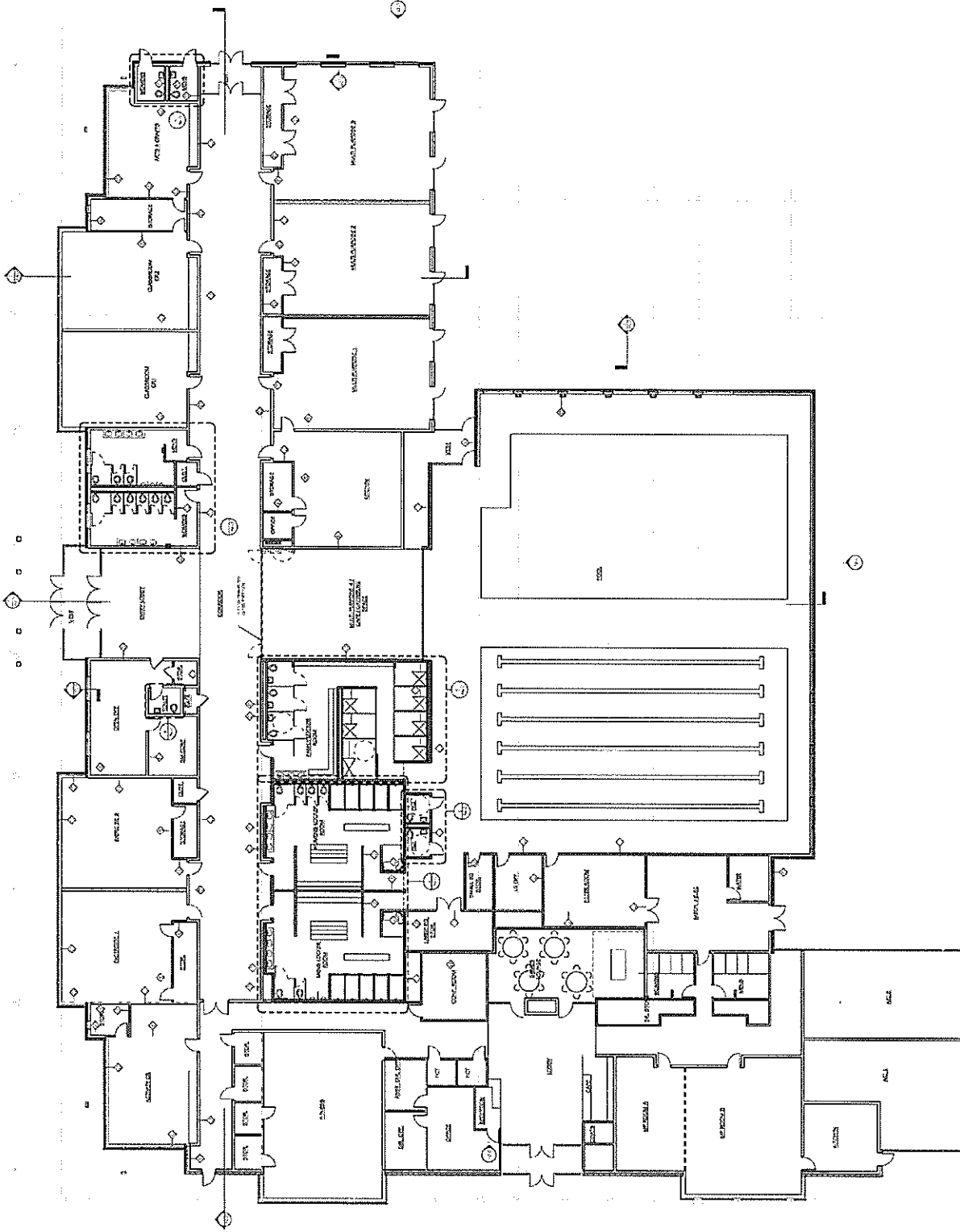
## SITE "C" PLAN





# NEWTOWN SENIOR CENTER

Status Update  
April 28, 2017





## Programming Study for the Newtown Senior Center

Program Summary

Updated April 28, 2017

<b>Page</b>	<b>Building Program Space</b>	<b>Associated Net Area</b>
1	ENTRY VESTIBULE	75 sf
2	LOBBY	635 sf
3	HC Toilet ROOMS & COAT SERVICES – 185 sf	In Lobby
4	COMMUNITY INFORMATION CENTER	In Lobby
5	CAFÉ – 150 sf	In Lobby
6	WIFI Lounge – 50 sf	In Lobby
7	GALLERY	In Circulation
8	HEALTH SCREENING / SALON	In Admin Space
9	SENIOR RETAIL STORE	125 sf
10	ADMINISTRATIVE OFFICES & SOCIAL SERVICES	700 sf
11	ACTIVITY SPACES	1,500 sf
12	GAME ROOMS / TABLE GAMES & CARDS	In Activity Space
13	LIBRARY / COMPUTER	In Activity Space
14	ARTS & CRAFTS	1,600 sf
15	EXERCISE ROOM & HEALTH	1,200 sf
16	FITNESS ROOM( Use Health/ Fitness Space)	In health/Exercise
17	CHANGING ROOMS / JAN	In Aquatic Program
18	MULTI-PURPOSE ROOM	1,200 sf
19	KITCHEN	300 sf
20	TOILET ROOMS	500 sf
21	ELECTRIC ROOMS	In Aquatic Center - Shared
22	MECHANICAL ROOM	In Aquatic Center - Shared
23	WATER / SPRINKLER ROOM	In Aquatic Center - Shared
24	EMERGENCY GENERATOR	On-site
25	CIRCULATION	Net to Gross
Sub-Total of Net Space Needs		7,835 sf
Net to gross Calculation		x 1.20
<b>Total Gross Space Needs</b>		<b>9,402 SF</b>

318 Main Street  
Farmington, CT 06032

860.677.4594  
860.677.8534 FAX