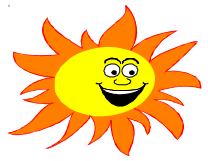




NEWTOWN



PARKS AND RECREATION DAY CAMP

A wonderful summer day camp awaits your child. Games, sports, field trips, arts & crafts and socialization are just a sampling of the good times to be had.

CAMP HOURS - The regular camp hours are Monday through Friday 9:00 am - 3:00 pm with drop off time beginning at 8:50 am and pick up promptly at 3:00 pm. Please respect the camp hours and make every effort to drop off and pick up your child on time. Early Drop Off is available starting at 8:00 am and Extended Stay until 6:00 pm sharp! If a parent/guardian is extremely late picking up their child, they will be charged a late fee of \$15.00 per day. This fee must be paid in the office the next day. If a parent/guardian is consistently late picking up their child, they will be asked not to bring their child/children back to camp. NO refunds are given for Early Drop Off or Extended Stay, therefore it is requested that careful consideration be given prior to registering. You must register for Extended Stay at the Parks and Recreation office 24 hours in advance, NO phone calls please! If you are picking your child up early, it is extremely important to send a note to the counselor. A child must have a note from a parent/guardian to be allowed to walk or bike home.

RAINY DAY POLICY - Camp will be held under the pavilion in the event of rain. The counselors have rainy day activities planned to keep their groups active and having fun. However, if there is lightning children should be picked up immediately! Extended Day parents must have alternative arrangements in the event of a storm. Refunds will not be given if camp or extended day is canceled. Please be sure to sign up for announcements/cancellations on our website www.newtown-ct.gov. We will post the notification on our website if your child needs to be picked up. No phone calls will be made!

WHAT SHOULD MY CAMPER BRING TO CAMP? - Each day throughout the summer campers should bring the following things in a backpack: Lunch, swim suit, towel, water, drink, sunscreen, hat, fruit, snack and a smile on their face. Campers should wear sneakers everyday for safety reasons. This is an outdoor camp with many games involving running around. Please be sure to clearly mark all of your campers' personal belongings with first and last name, this includes towels, lunch bags, water bottles etc. If by chance your camper does lose something, there will be a lost and found located in the camp shed that you can check all summer long for lost items. Once camp is over lost and found items will be disposed of after two weeks.

If your child will be attending the PM extended day program until 6:00 pm, we encourage you to send them with a snack each day.

THINGS NOT TO BRING TO CAMP!!! - Campers are encouraged to keep personal items and valuables at home. NO video games, CD players, Ipods, MP3 players, cell phones, skateboards, trading cards or anything that is valuable. We cannot be responsible for these items, and it is easier if they were kept home. Additional items which are not permitted at camp are water guns, any sharp objects or weapons, gum or glass bottles.

MEDICATION - Please notify the Parks and Recreation Office, Site Directors and Counselors in writing if your child takes medication or has any allergies (i.e. food, bees, nuts, etc.) Counselors will not administer allergy shots, insulin, Epi Pens or medication of any kind. However, they will supervise any child that needs to self medicate. Please note that Counselors are not allowed to remove ticks. You will be contacted if a tick is found on your child during camp.

BEHAVIOR - If a counselor is experiencing a behavior problem with a child, the parents will be called in for a conference. If the problem continues, the parents will be asked to remove the child from camp. REFUNDS will not be given if a child is asked to leave camp.

SUNSCREEN POLICY - We ask that you apply the appropriate SPF sunscreen protection to your child/children before they head off to camp. Please include sunscreen protection with your camper's pack. We recommend that your child/children apply their sunscreen throughout the day. We will remind all campers to reapply their sunscreen. We will offer assistance or guidance with the sunscreen application. If your child/children forgets their sunscreen protection, we have 30 SPF sunscreen if needed. We don't recommend that our counselors apply sunscreen. If your child needs help in applying sunscreen, please speak with your child/children's counselor.

LUNCH AND SNACKS - We cannot stress enough the importance of keeping the children hydrated throughout the summer hot days. Please send your camper with plenty of liquids (especially water)! Also have campers bring their own lunch and snack every day labeled with their first and last name. We have refrigeration on site to store lunches. Campers should also pack plenty of snacks, especially if they are in the PM extended day program. We will have a snack machine and soda machine available for purchase on site.

DROP OFF & PICK UP PROCEDURES - As you will come to find out pick up and drop off time can become congested. It is important that you remain in your car while picking up or dropping off your child/children. Traffic becomes even more congested when people decide to leave their car in the middle of the lane. IF YOU PLAN ON GETTING OUT, please park in the parking spaces either by the tennis courts or by the pool and walk your child/children to his/her counselor. Your child's camp counselor will come to your vehicle to greet your child or bring your child to you. Please swiftly sign your child in/out and proceed in line towards the park exit. Please remember that the park is open to the general public while Summer Day Camp is in progress and traffic can be congested. Patience is required!

DAILY SIGN IN & SIGN OUT POLICY - Each day during the summer parents/guardians will be required to sign their child/children in and out of the camp program. The counselor's in your child's group will be required to have you sign in and out each day. If you going to have someone other than yourself pick up your child, you are required to fill out a permission form with the Site Director 24 hours in advance. Our staff will not let your child go home with anyone except yourself or any persons specified on your child's camp registration form unless it is in writing ahead of time. If you are going to have someone assist you in picking up your child/children please make sure you fill out a form with your child's counselor. We also ask for the person to show a picture ID before releasing your child/children.

CAMP RULES - Treat fellow campers and counselors with respect. You must listen to your counselor at all times. Keep your hands to yourself. No kicking, biting, hitting, throwing objects... If you should have a problem tell your counselors immediately. Stay with your group at all times. Swearing and other inappropriate language is not allowed in camp. Clean up after yourself. Pick up any trash and make sure you clean your table after lunch. RESPECT other people's property. This means no touching or taking other items or food that does not belong to you. Fighting is not allowed at camp and is grounds for suspension from the program (no refunds will be given). Leave all personal items at home. No toys, radios, gum, electronic games, etc. (Anything lost, stolen or broken is not the responsibility of the camp, leave valuables at home.) DO NOT bring any glass, sharp or potentially dangerous objects to camp! SAFETY FIRST. RULES ARE MADE FOR THE SAFETY OF THE GROUP. HAVE FUN!

- ⇒ Each child will receive a camper T-shirt, which must be worn on all field trips. This allows for easier identification of our groups when in large crowds. Children enrolled in more than one session will receive two shirts.
- ⇒ Transportation to and from the program is the responsibility of the parents.
- ⇒ Swim Lessons will only be given at Treadwell Park, weather permitting. Water slide will be at Dickinson Park three times a week.
- ⇒ The Summer Day Camp is for Newtown residents only. It is available to children 4 years old. Please send a stamped, self-addressed envelope if you wish to have the birth certificate returned.

REFUND POLICY FOR DAY CAMP: Refunds, less a \$10.00 refund fee, will be given if notification is received in the office one week prior to the start of a session. Once the session starts, **NO** refunds will be given. Therefore, it is requested that careful consideration be given prior to registering for day camp.

DICKINSON DAY CAMP

There will be theme weeks at Dickinson Day Camp. Returning Site Director, Jeffrey Earle, is very excited about planning these special weeks for our campers. Each week, camp will have a different theme with activities, games and arts and crafts that will be geared toward the theme. A water inflatable will be available three times a week. There will be a snack machine & soda machine on site.

DAY CAMP FEES:

FEE: \$110.00 per week
(July 6th - July 9th only \$88.00)
FEE: \$690.00 (Sign up for all seven weeks and save)

DAY CAMP HOURS:

9 AM - 3 PM Monday - Friday

EXTENDED DAY FEES:

(July 6th - July 9th early drop off \$20.00/late pick up \$60.00)
EARLY DROP OFF: 8 - 9 AM \$25.00 PER WEEK
LATE PICK-UP: 3 - 6 PM \$75.00 PER WEEK

Daily early drop off or late pick up cannot be done online
Please register at the office.



HALF PINT PROGRAM

FOR 4 & 5 YEARS ONLY

A wonderful summer day camp experience awaits your child in this new 3 hour a day, Monday - Friday camp. Limited to 15 campers per week, per session.

FEE: \$55.00
(July 6th - July 9th \$44.00)

TIME: 9:00 AM - 12:00 PM

416166 A	June 28th - July 2nd
416166 B	July 6th - July 9th
416166 C	July 12th - July 16th
416166 D	July 19th - July 23rd
416166 E	July 26th - July 30th
416166 F	August 2nd - August 6th
416166 G	August 9th - August 13th

TIME: 12:00 PM - 3:00 PM

416166 H	June 28th - July 2nd
416166 I	July 6th - July 9th
416166 J	July 12th - July 16th
416166 K	July 19th - July 23rd
416166 L	July 26th - July 30th
416166 M	August 2nd - August 6th
416166 N	August 9th - August 13th

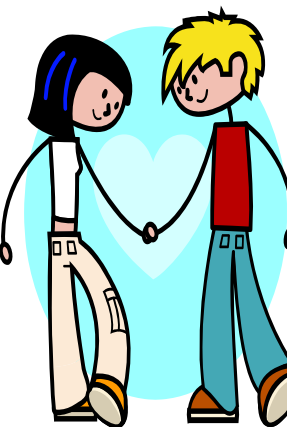


EXTENDED DAY

No refunds for extended day

(July 6th - July 9th early drop off \$20.00/late pick up \$60.00)
EARLY DROP-OFF: 8 - 9 AM \$25.00 PER WEEK
LATE PICK-UP: 3 - 6 PM \$75.00 PER WEEK

416080 A	Early Drop-off	June 28th - July 2nd
416080 B	Late Pick-up	
416080 C	Early Drop-off	July 6th - July 9th
416080 D	Late Pick-up	
416080 E	Early Drop-off	July 12th - July 16th
416080 F	Late Pick-up	
416080 G	Early Drop-off	July 19th - July 23rd
416080 H	Late Pick-up	
416080 I	Early Drop-off	July 26th - July 30th
416080 J	Late Pick-up	
416080 K	Early Drop-off	August 2nd - August 6th
416080 L	Late Pick-up	
416080 M	Early Drop-off	August 9th - August 13th
416080 N	Late Pick-up	



TINY TOTS (4 years old)

416160 A	June 28th - July 2nd
416160 B	July 6th - July 9th
416160 C	July 12th - July 16th
416160 D	July 19th - July 23rd
416160 E	July 26th - July 30th
416160 F	August 2nd - August 6th
416160 G	August 9th - August 13th

5 & 6 YEARS OLD

416161 A	June 28th - July 2nd
416161 B	July 6th - July 9th
416161 C	July 12th - July 16th
416161 D	July 19th - July 23rd
416161 E	July 26th - July 30th
416161 F	August 2nd - August 6th
416161 G	August 9th - August 13th

7 & 8 YEAR OLD GIRLS

416162 A	June 28th - July 2nd
416162 B	July 6th - July 9th
416162 C	July 12th - July 16th
416162 D	July 19th - July 23rd
416162 E	July 26th - July 30th
416162 F	August 2nd - August 6th
416162 G	August 9th - August 13th

7 & 8 YEAR OLD BOYS

416163 A	June 28th - July 2nd
416163 B	July 6th - July 9th
416163 C	July 12th - July 16th
416163 D	July 19th - July 23rd
416163 E	July 26th - July 30th
416163 F	August 2nd - August 6th
416163 G	August 9th - August 13th

9 & 10 YEAR OLD GIRLS

416164 A	June 28th - July 2nd
416164 B	July 6th - July 9th
416164 C	July 12th - July 16th
416164 D	July 19th - July 23rd
416164 E	July 26th - July 30th
416164 F	August 2nd - August 6th
416164 G	August 9th - August 13th

9 & 10 YEAR OLD BOYS

416165 A	June 28th - July 2nd
416165 B	July 6th - July 9th
416165 C	July 12th - July 16th
416165 D	July 19th - July 23rd
416165 E	July 26th - July 30th
416165 F	August 2nd - August 6th
416165 G	August 9th - August 13th

All Six Weeks June 28 - August 13th

Fee: \$690.00

416167 A	4 years old
416167 B	5 & 6 years old
416167 C	7 & 8 year old girls
416167 D	7 & 8 year old boys
416167 E	9 & 10 year old girls
416167 F	9 & 10 year old boys

TREADWELL DAY CAMP

DAY CAMP FEES:

FEE: \$120.00 per week
(July 6th - July 9th only \$96.00)
FEE: \$750.00 (Sign up for all seven weeks and save)

DAY CAMP HOURS:

9 AM - 3 PM Monday - Friday

EXTENDED DAY FEES:

(July 6th - July 9th early drop off \$20.00/late pick up \$60.00)
EARLY DROP-OFF: 8 - 9 AM \$25.00 PER WEEK
LATE PICK-UP: 3 - 6 PM \$75.00 PER WEEK

Daily early drop off or late pick up cannot be done online-Please register at the office.



PLEASE NOTE: Swim lessons will be offered at Treadwell. They will begin at 9:00 am. Please make every effort to drop off children by 8:45 am.

EXTENDED DAY

No refunds for extended day

(July 6th - July 9th early drop off \$20.00/late pick up \$60.00)
EARLY DROP-OFF: 8 - 9 AM \$25.00 PER WEEK
LATE PICK-UP: 3 - 6 PM \$75.00 PER WEEK

416090 A	Early Drop-off	June 28th - July 2nd
416090 B	Late Pick-up	
416090 C	Early Drop-off	July 6th - July 9th
416090 D	Late Pick-up	
416090 E	Early Drop-off	July 12th - July 16th
416090 F	Late Pick-up	
416090 G	Early Drop-off	July 19th - July 23rd
416090 H	Late Pick-up	
416090 I	Early Drop-off	July 26th - July 30th
416090 J	Late Pick-up	
416090 K	Early Drop-off	August 2nd - August 6th
416090 L	Late Pick-up	
416090 M	Early Drop-off	August 9th - August 13th
416090 N	Late Pick-up	



TINY TOTS (4 years old)

416180 A	June 28th - July 2nd
416180 B	July 6th - July 9th
416180 C	July 12th - July 16th
416180 D	July 19th - July 23rd
416180 E	July 26th - July 30th
416180 F	August 2nd - August 6th
416180 G	August 9th - August 13th

5 & 6 YEARS OLD

416181 A	June 28th - July 2nd
416181 B	July 6th - July 9th
416181 C	July 12th - July 16th
416181 D	July 19th - July 23rd
416181 E	July 26th - July 30th
416181 F	August 2nd - August 6th
416181 G	August 9th - August 13th

7 & 8 YEAR OLD GIRLS

416182 A	June 28th - July 2nd
416182 B	July 6th - July 9th
416182 C	July 12th - July 16th
416182 D	July 19th - July 23rd
416182 E	July 26th - July 30th
416182 F	August 2nd - August 6th
416182 G	August 9th - August 13th

7 & 8 YEAR OLD BOYS

416183 A	June 28th - July 2nd
416183 B	July 6th - July 9th
416183 C	July 12th - July 16th
416183 D	July 19th - July 23rd
416183 E	July 26th - July 30th
416183 F	August 2nd - August 6th
416183 G	August 9th - August 13th

9 & 10 YEAR OLD GIRLS

416184 A	June 28th - July 2nd
416184 B	July 6th - July 9th
416184 C	July 12th - July 16th
416184 D	July 19th - July 23rd
416184 E	July 26th - July 30th
416184 F	August 2nd - August 6th
416184 G	August 9th - August 13th

9 & 10 YEAR OLD BOYS

416185 A	June 28th - July 2nd
416185 B	July 6th - July 9th
416185 C	July 12th - July 16th
416185 D	July 19th - July 23rd
416185 E	July 26th - July 30th
416185 F	August 2nd - August 6th
416185 G	August 9th - August 13th

All Six Weeks June 28th - August 13th

Fee: \$750.00

416186 A	4 years old
416186 B	5 & 6 years old
416186 C	7 & 8 year old girls
416186 D	7 & 8 year old boys
416186 E	9 & 10 year old girls
416186 F	9 & 10 year old boys

