

# TOWN OF NEWTOWN

## PLAN OF CONSERVATION AND DEVELOPMENT DATA BOOK



DATE

**Newtown Finance Department**

Bob Tait

**Newtown Purchasing Department**

Kerri Mubarek

**Newtown First Selectman**

Dan Rosenthal

**Newtown Emergency Services Department**

Maureen Will

**Newtown Police Department**

David Kullgren

**Newtown Public Works Department**

Fred Hurley

John Curtis

**Newtown Parks and Recreation**

Carl Samuelson

Matthew Ariniello

**Economic and Community Development**

Kimberly Chiappetta

**Health Department**

Donna Culbert

**Town Clerk**

Debbie Halstead

**Land Use Agency**

Rob Sibley

**Western Connecticut Council of Governments**

## **Introduction**

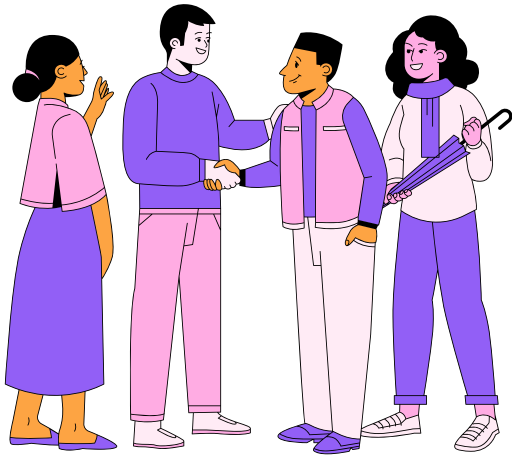
This document has been compiled to support the update to the town of Newtown's Plan of Conservation and Development. Information analyzed and presented comes from various sources, including federal, state, and county departments. 2020 data was used to represent the most up-to-date information. When applicable, comparisons from 2000 and 2010 are included, along with specific comparisons to Fairfield County.

### **Data Source:**

- United States Census Bureau, Decennial Census (2020) and American Community Survey (2000, 2010, 2020)
- Western Connecticut Council of Governments

NEWTOWN AT A GLANCE	5
DEMOGRAPHICS - POPULATION	7
DEMOGRAPHICS - AGE	11
DEMOGRAPHICS - RACE AND ETHNICITY	12
DEMOGRAPHICS -NATIVITY AND CITIZENSHIP	13
DEMOGRAPHICS - RACE AND ETHNICITY	14
DEMOGRAPHICS - LANGUAGES	15
DEMOGRAPHICS - MARITAL STATUS	16
DEMOGRAPHICS - MOBILITY	17
ECONOMY - LABOR FORCE	18
ECONOMY - OCCUPATION & INDUSTRY	19
ECONOMY - EDUCATIONAL ATTAINMENT	20
ECONOMY - ENROLLMENT	21
ECONOMY - INCOME	22
LAND USE -	23
LAND USE - ZONING	24
HOUSING - TOTAL HOUSEHOLDS	25
HOUSING - OCCUPANCY	26
HOUSING - VALUE	29
HOUSING - AFFORDABILITY	32





**Population: 27,173**



**Median Income: \$125,028**



**88.6% Owner Occupied**  
**11.4% Renter Occupied**



**K-12 Students: 5,048**



**Labor Force: 15,339**



**Median Home Value: \$389,600**

## Demographics

- Newtown's population shrunk by 1.4% between 2010 and 2020, the first time the Town has experienced population loss in almost a century.
- Newtown's population is aging, the 55+ population has approximately doubled since 2000.
- Newtown is a predominantly White, English-speaking Town.

## Economy

- The labor force grew by 15% between 2010 (13,328) and 2020 (15,339).
- The number of employed women in Newtown has increased by about 28% between 2010 (5,547 women) and 2020 (7,101 women).
- The median household income is \$125,028
- Newtown's population is highly educated: 51% of residents age 25 and older hold a bachelor's degree.
- K12 enrollment decreased by 17% over the last decade.

## Land Use

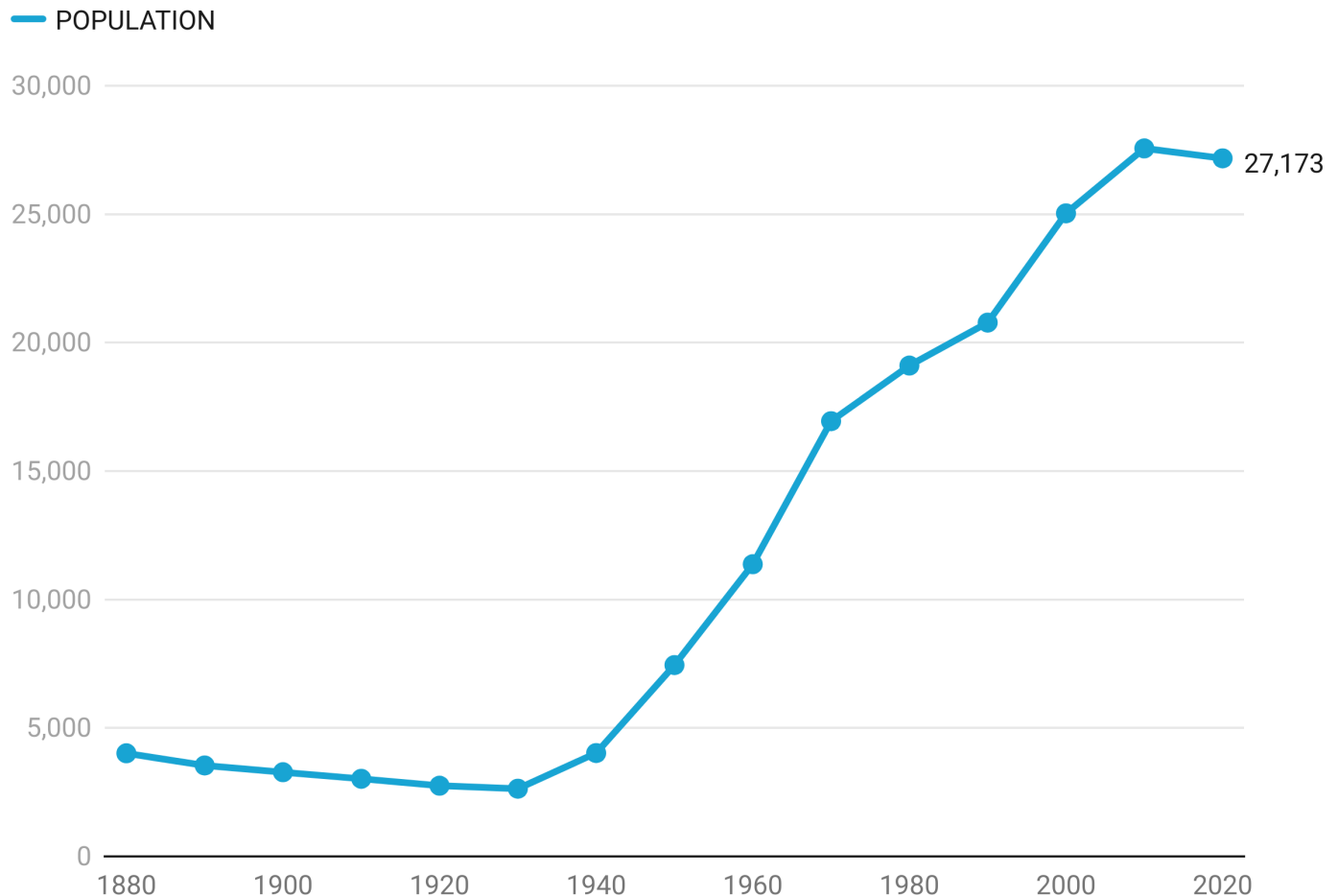
- About 92% of the Town (approximately 55 square miles) is zoned for residential use or farming.
- Land Use PLACEHOLDER

## Housing

- There are 9,766 households in Newtown. While the Town population decreased over the last decade, the number of households increased by 3.2%.
- Of the 10,322 housing units in Newtown, 94.6% are occupied.
- Most of Newtown's occupied housing units are single-family detached structures.
- The median value of homes decreased by 17.7% between 2010 and 2020.
- The proportion of rent-burdened households (renters who spent 30% or more of their income to gross rent) decreased by about 10% between 2010 (49.9%) and 2020 (39.5%).

Newtown has a population of 27,173 residents. The Town population shrank by 387 residents (1.4%) between 2010 and 2020, the first time Newtown has experienced population loss in almost a century. Newtown experienced the most dramatic population growth in the mid-twentieth century, nearly tripling in size between 1940 (4,023) and 1960 (11,373).

## Newtown Population, 1880 to 2020



Source: US Census Bureau • Created with Datawrapper

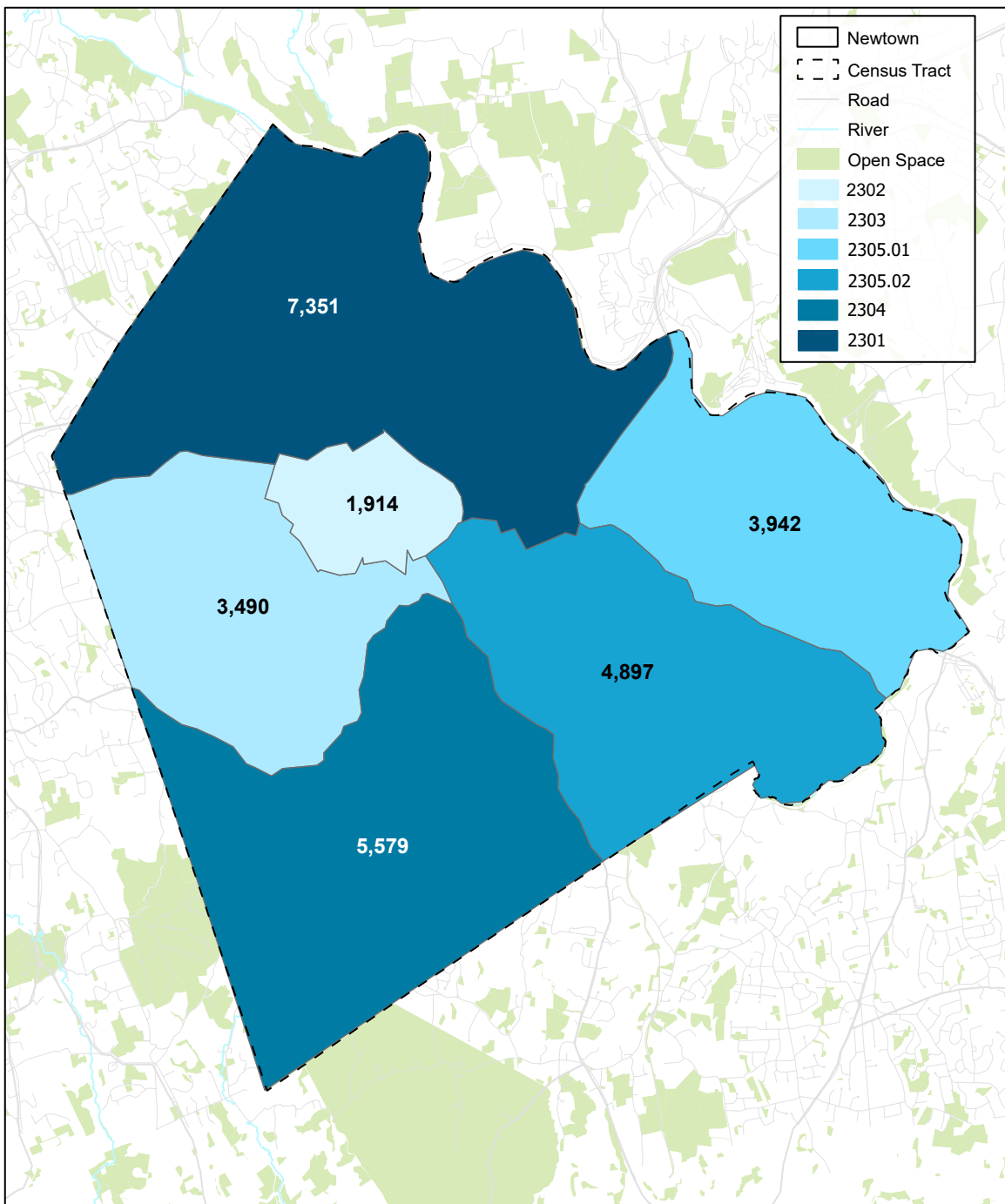
## Newtown Population Change, 1880 to 2020

YEAR	POPULATION	PERCENT CHANGE
1880	4,013	
1890	3,539	-11.8%
1900	3,276	-7.4%
1910	3,021	-7.8%
1920	2,751	-8.9%
1930	2,635	-4.2%
1940	4,023	52.7%
1950	7,448	85.1%
1960	11,373	52.7%
1970	16,942	49.0%
1980	19,107	12.8%
1990	20,779	8.8%
2000	25,031	20.5%
2010	27,560	10.1%
2020	27,173	-1.4%

Source: US Census Bureau • Created with Datawrapper

Census tracts are small geographic subdivisions of a county that are represented by a numeric code. On average, census tracts are comprised of about 4,000 residents; when census tracts exceed 8,000 people, they are sub-divided. Newtown was comprised by five census tracts during the 2000s, but the 2020 Census divided census tract 2305 into 2305.01 and 2305.02.

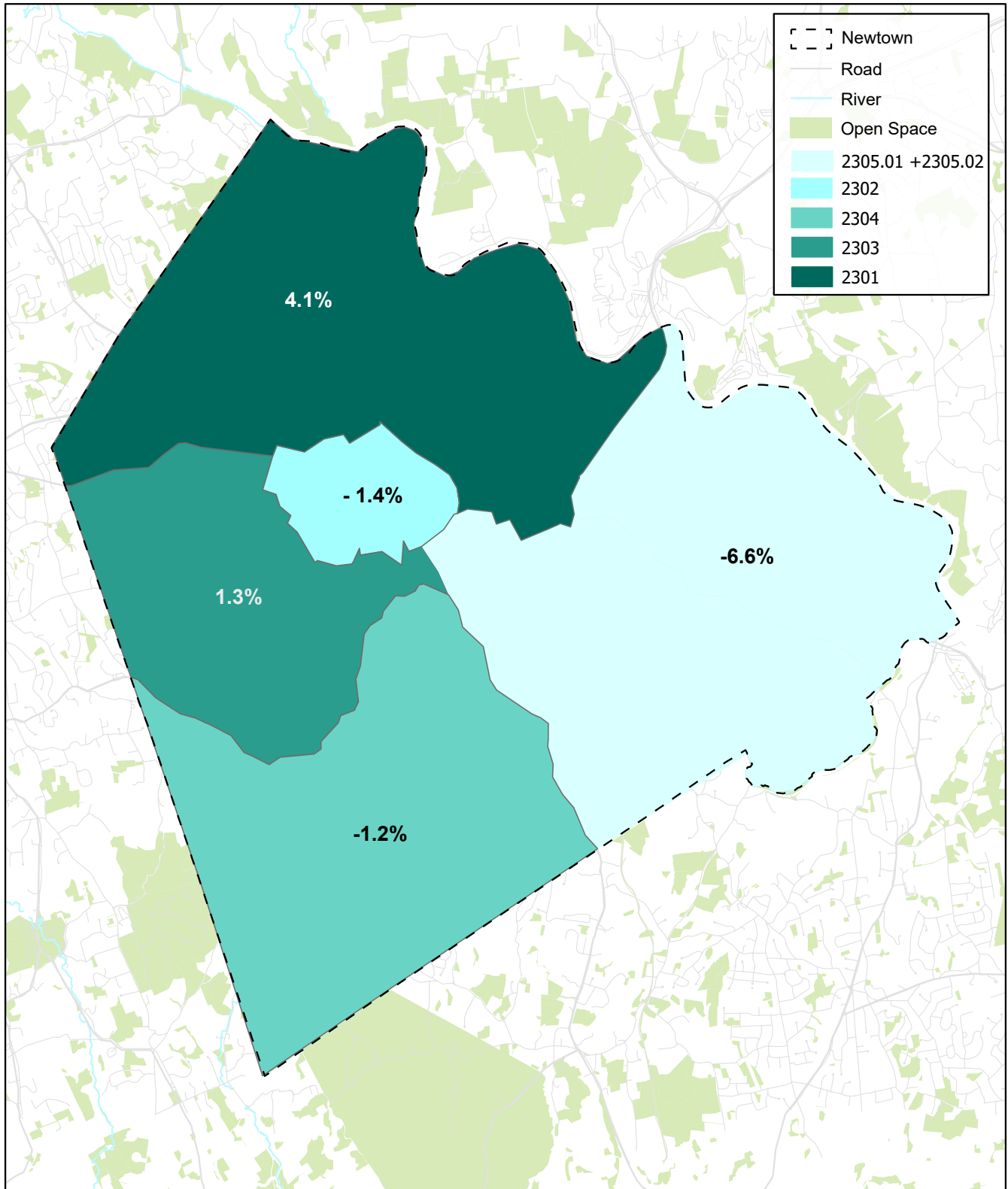
Between 2010 and 2020, northern Newtown (i.e., census tract 2301), grew by 4.1% and western Newtown (i.e., census tract 2303) grew by 1.3%. All other census tracts experienced population loss.



**Figure X: Newtown Population by Census Tract, 2020**

Sources: WestCOG, US Census Bureau, BFJ Planning





**Figure X: Newtown Census Tract Population Change, 2010 to 2020**

Sources: WestCOG, US Census Bureau, BFJ Planning



The senior population has increased and the youth population has decreased in recent decades. The largest age cohort in 2020 was residents aged 45-54 (4,214 residents). The 55+ population has approximately doubled since 2000 and represents a much larger proportion of Newtown's population.

## Newtown Age Distribution, 2000, 2010, 2020



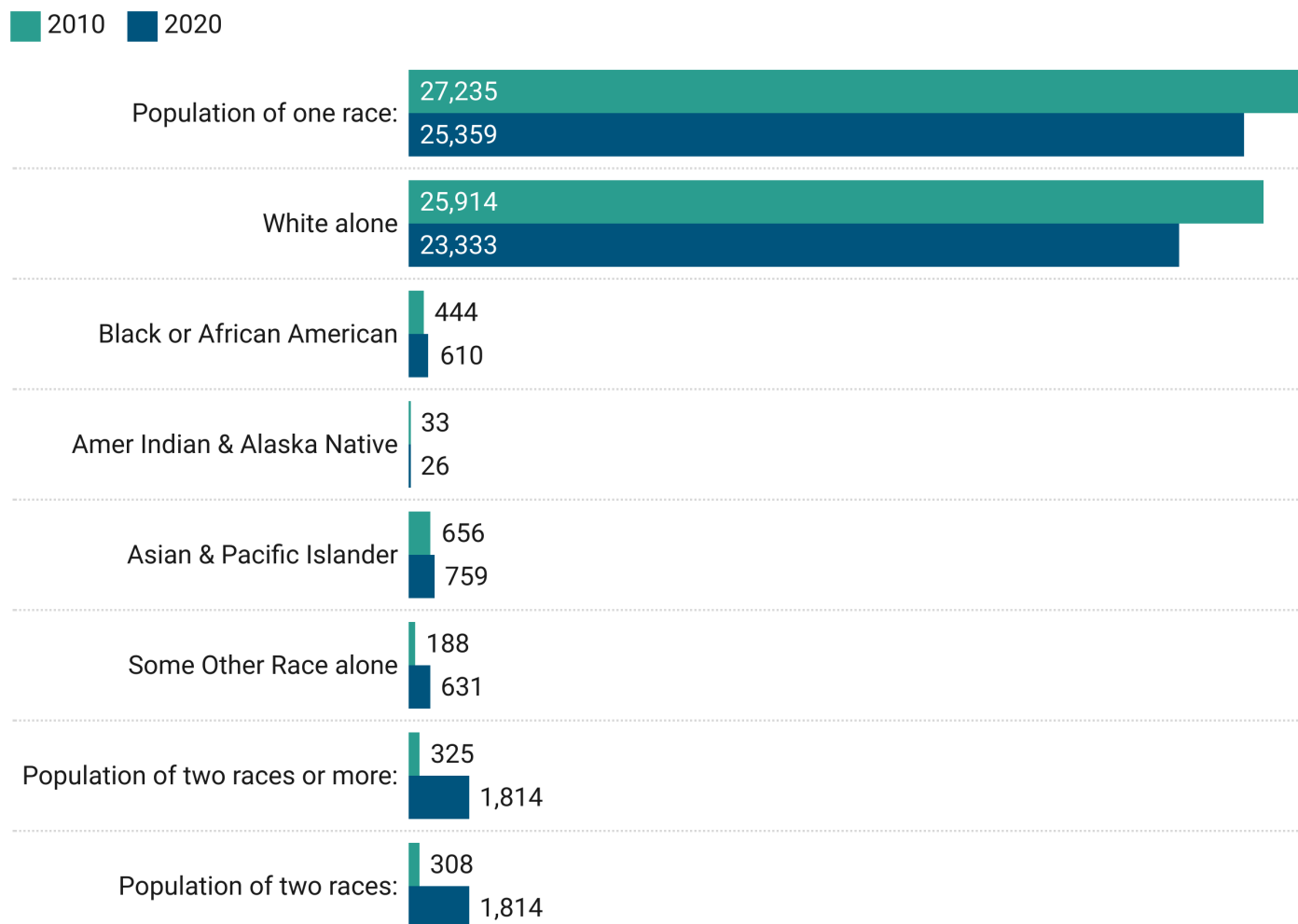
	2000	2010	2020
Under 5	1,997	1,345	1,210
5 to 9	2,228	2,182	1,484
10 to 14	2,016	2,589	1,806
15 to 19	1,404	1,966	2,038
20 to 24	621	956	1,538
25 to 34	3,081	1,548	2,410
35 to 44	5,295	3,871	2,915
45 to 54	3,970	5,502	4,214
55 to 59	1,344	1,988	2,630
60 to 64	936	1,479	2,055
65 to 74	1,185	1,898	2,724
75 to 84	698	1,082	1,481
85 +	256	372	668

Source: US Census Bureau • Created with Datawrapper

Newtown is a predominantly White community – 85.87% of Newtown residents identify as White alone. The remaining Town population is Black or African American (2.24%), American Indian and Alaska native (.1%), Asian and Pacific Islander (2.79%), Other (2.32%), and 6.68% of the population identifies with two or more races. 6.5% of Newtown is Hispanic or Latino.

Newtown became more racially/ethnically diverse between 2010 and 2020. The Black or African American population increased by 37% between 2010 (444) and 2020 (610) and the Newtown population of two races or more increased by 488% over the last decade (308 in 2010 compared to 1,814 in 2020).

## Newtown Race/Ethnicity, 2010, 2020

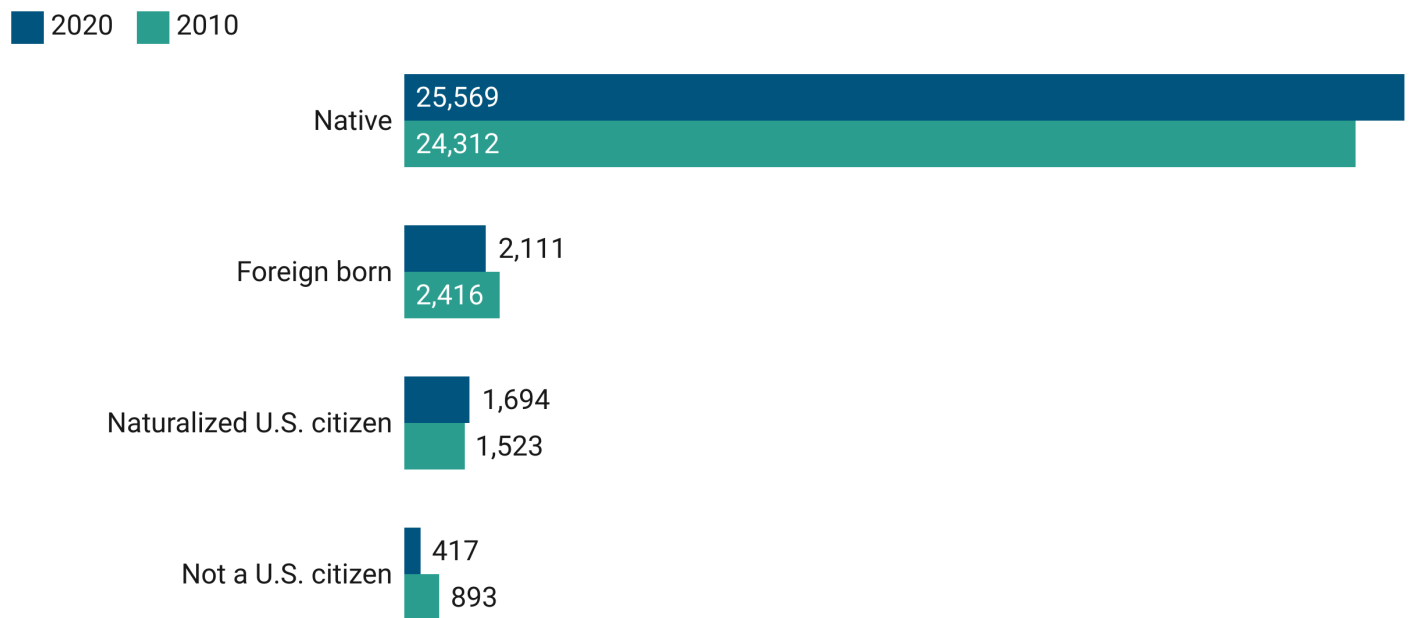


Source: U.S. Census Bureau • Created with Datawrapper



Newtown is predominantly comprised of native-born U.S. citizens. 86% (25,569) of Newtown residents are native-born U.S. Citizens. 2,111 residents are foreign born citizens, 1,694 are naturalized citizens, and 417 residents are not U.S. citizens. The foreign-born population in Newtown decreased slightly between 2010 and 2020.

## Newtown Nativity and Citizenship Status, 2010, 2020



Source: American Community Survey (ACS), 2010, 2020 • Created with Datawrapper

## Newtown Hispanic or Latino by Race & Ethnicity, 2020

NEWTOWN	2020	PERCENT
<b>Total population</b>	<b>27,173</b>	<b>100.0%</b>
<b>Hispanic or Latino (any race)</b>	<b>1,757</b>	<b>6.5%</b>
Not Hispanic or Latino	25,416	93.5%
<i>HISPANIC OR LATINO BY RACE</i>		
Total population	27,173	100.0%
Hispanic or Latino	1,757	6.5%
White alone	383	1.4%
Black or African American alone	18	0.1%
American Indian and Alaska Native alone	14	0.1%
Asian alone	14	0.1%
Native Hawaiian and Other Pacific Islander alone	1	-
Some Other Race alone	495	1.8%
Two or More Races	832	3.1%
Not Hispanic or Latino	25,416	93.5%
White alone	22,950	84.5%
Black or African American alone	592	2.2%
American Indian and Alaska Native alone	12	-
Asian alone	734	2.7%
Native Hawaiian and Other Pacific Islander alone	10	-
Some Other Race alone	136	0.5%
Two or More Races	982	3.6%

Source: American Community Survey (ACS), 2020 • Created with Datawrapper

97.8% of Newtown residents are proficient English speakers, with 90.1% of the population exclusively speaking English. Non-English speakers speak Spanish (3.3%), Asian and Pacific Island languages (.8%), and other Indo-European languages (5.5%).

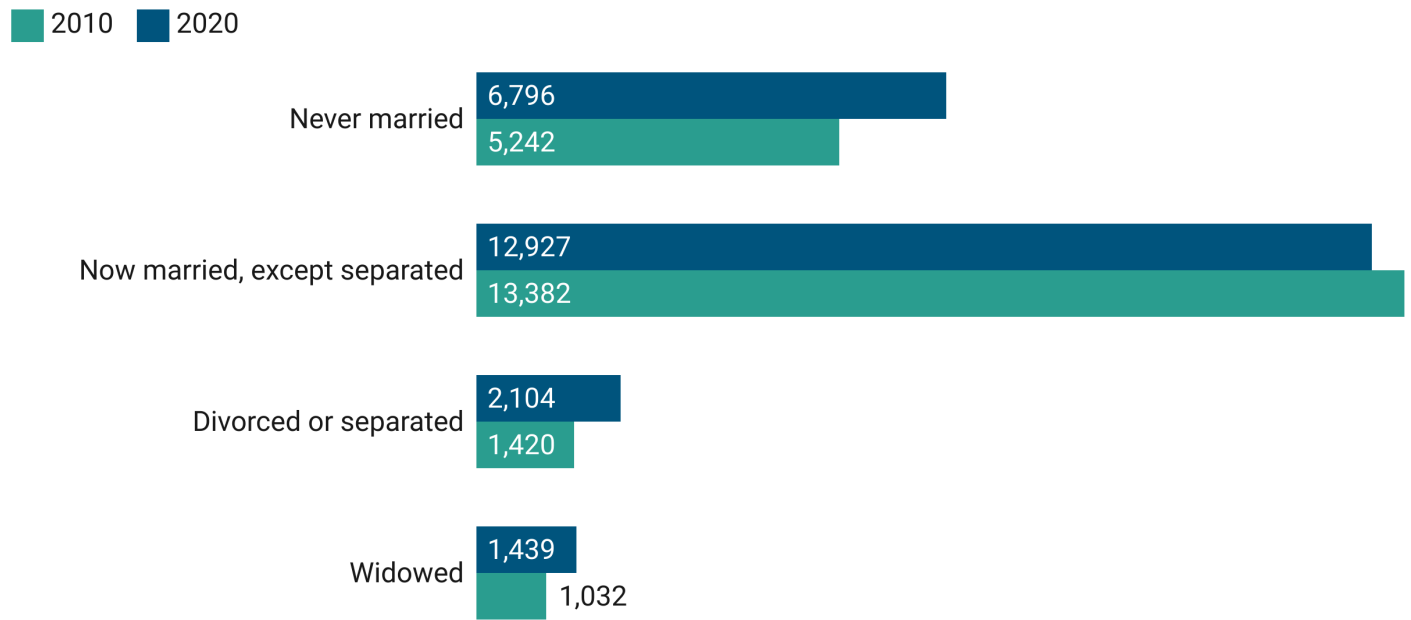
## Newtown Languages Spoken at Home, 2020

LANGUAGE SPOKEN AT HOME 2020	TOTAL POPULATION	PERCENT OF TOTAL	SPEAK ENGLISH ONLY OR VERY WELL	PERCENT OF ENGLISH SPEAKERS
<b>Population 5 years and over</b>		<b>26,783</b>	<b>26,204</b>	<b>97.8%</b>
Speak only English	24,135			90.1%
Speak a language other than English	2,648	9.9%	2,069	78.1%
<b>Speak a language other than English</b>				
Spanish	885	3.3%	720	81.4%
Other Indo-European languages	1,473	5.5%	1,151	78.1%
Asian and Pacific Island languages	210	0.8%	151	71.9%
Other languages	80	0.3%	47	58.8%

Source: American Community Survey (ACS), 2020 • Created with Datawrapper

The number of unmarried households in Newtown (i.e., never married, separated, divorced, widowed) has increased since 2010. The divorced or separated population increased by 48% between 2010 and 2020, and the number of widows and widowers increased by 39% over the last decade.

## Newtown Marital Status, 2010, 2020



Source: American Community Survey (ACS), 2010, 2020 • Created with Datawrapper

Most residents who move to Newtown already live in the state of Connecticut. Very few international residents move to Newtown.

## Newtown Mobility, 2020

AGE COHORT	TOTAL POPULATION	MOVED WITHIN SAME COUNTY	MOVED FROM DIFFERENT COUNTY	MOVED FROM DIFFERENT STATE	MOVED FROM ABROAD
Population 1 year and over	27,680	4.1%	2.2%	1.3%	0.2%
AGE					
1 to 4 years	897	1.4%	3.1%	1.4%	-
5 to 17 years	5,023	5.0%	1.4%	1.5%	0.4%
18 to 24 years	2,260	5.4%	3.6%	3.2%	0.6%
25 to 34 years	2,122	5.3%	9.7%	0.8%	0.4%
35 to 44 years	2,967	4.3%	1.5%	1.2%	-
45 to 54 years	5,011	2.9%	1.5%	1.1%	-
55 to 64 years	4,748	4.8%	1.9%	0.3%	0.5%
65 to 74 years	2,575	1.6%	0.1%	1.0%	-
75 years and over	2,077	5.0%	0.7%	2.0%	-
SEX					
Male	13,948	3.9%	3.0%	1.6%	0.1%
Female	13,732	4.4%	1.5%	0.9%	0.4%

Created with Datawrapper

Newtown's labor force grew by 15% over the last decade. The number of women participating in the labor force increased by 23.6%. The Town's unemployment rate decreased from 6% to 5%.

## Newtown Labor Force Participation, 2010, 2020

EMPLOYMENT STATUS	2010	2020	PERCENTAGE CHANGE
<b>Population 16 years and over</b>	<b>20,560</b>	<b>22,724</b>	<b>10.5%</b>
In labor force	13,328	15,339	15.1%
Civilian labor force	13,289	15,339	15.4%
Employed	12,497	14,576	16.6%
Unemployed	792	763	-3.7%
Armed Forces	39	-	-100.0%
Not in labor force	7,232	7,385	2.1%
Civilian labor force	13,289	15,339	15.4%
Percent Unemployed	6%	5%	-17%
<i>Females 16 years and over</i>	<i>10,018</i>	<i>11,269</i>	<i>12.5%</i>
In labor force	5,959	7,363	23.6%
Civilian labor force	5,955	7,363	23.6%
Employed	5,547	7,101	28.0%
Own children under 6 years	1,764	1,310	-25.7%
All parents in family in labor force	1,018	974	-4.3%
Own children 6 to 17 years	5,557	4,545	-18.2%
All parents in family in labor force	3,306	3,429	3.7%

Source: American Community Survey (ACS), 2010, 2020 • Created with Datawrapper

The largest industry employer is educational services, health care, and social assistance (23.9%). Over half of the working population occupies positions in management, business science, or the arts (52.7%). 79.3% of residents are privately employed, 13.7% are government employees, and 7% are self-employed.

### Newtown Employment by Occupation, Industry, 2020

	TOTAL	PERCENT
<b>OCCUPATION</b>		
Civilian employed population 16 years and over	14,576	
Management, business, science, and arts occupations	7,688	52.7%
Service occupations	1,975	13.5%
Sales and office occupations	2,924	20.1%
Natural resources, construction, and maintenance occupations	1,211	8.3%
Production, transportation, and material moving occupations	778	5.3%
<b>INDUSTRY</b>		
Civilian employed population 16 years and over	14,576	
Agriculture, forestry, fishing and hunting, and mining	141	1.0%
Construction	958	6.6%
Manufacturing	1,725	11.8%
Wholesale trade	411	2.8%
Retail trade	1,235	8.5%
Transportation and warehousing, and utilities	641	4.4%
Information	438	3.0%
Finance and insurance, and real estate and rental and leasing	1,245	8.5%
Professional, scientific, and management, and administrative and waste management services	2,213	15.2%
Educational services, and health care and social assistance	3,481	23.9%
Arts, entertainment, and recreation, and accommodation and food services	824	5.7%
Other services, except public administration	696	4.8%
Public administration	568	3.9%
<b>CLASS OF WORKER</b>		
Civilian employed population 16 years and over	14,576	
Private wage and salary workers	11,562	79.3%
Government workers	1,999	13.7%
Self-employed in own not incorporated business workers	1,015	7.0%
Unpaid family workers	-	0.0%

Source: American Community Survey (ACS), 2020 • Created with Datawrapper

Newtown's population is highly educated: 51% of residents age 25 and older hold a bachelor's degree or higher, and 96.5% of residents age 25 and older are high school graduates.

## Newtown Educational Attainment, 2020

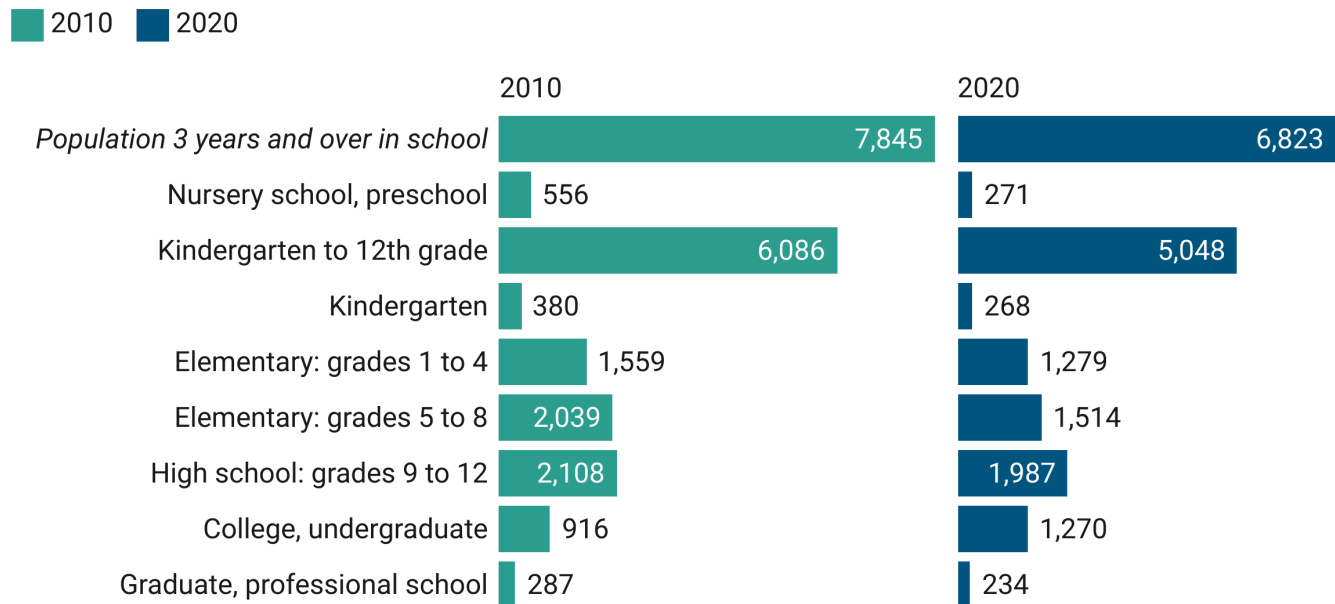
	TOTAL	PERCENT TOTAL	MALE	PERCENT MALE	FEMALE	PERCENT FEMALE
<b>Population 18 to 24 years</b>	<b>2,260</b>		<b>1,418</b>		<b>842</b>	
Less than high school graduate	188	8.3%	109	7.7%	79	9.4%
High school grad (includes GED)	664	29.4%	491	34.6%	173	20.5%
Some college or associate degree	830	36.7%	460	32.4%	370	43.9%
Bachelor's degree or higher	578	25.6%	358	25.2%	220	26.1%
<b>Population 25 years and over</b>	<b>19,500</b>		<b>9,488</b>		<b>10,012</b>	
Less than 9th grade	272	1.4%	182	1.9%	90	0.9%
9th to 12th grade, no diploma	410	2.1%	288	3.0%	122	1.2%
High school grad (includes GED)	4,186	21.5%	2,421	25.5%	1,765	17.6%
Some college, no degree	3,314	17.0%	1,681	17.7%	1,633	16.3%
Associate's degree	1,310	6.7%	510	5.4%	800	8.0%
Bachelor's degree	5,857	30.0%	2,595	27.4%	3,262	32.6%
Graduate or professional degree	4,151	21.3%	1,811	19.1%	2,340	23.4%
High school graduate or higher	18,818	96.5%	9,018	95.0%	9,800	97.9%
Bachelor's degree or higher	10,008	51.3%	4,406	46.4%	5,602	56.0%
<b>Population 25 to 34 years</b>	<b>2,122</b>		<b>1,303</b>		<b>819</b>	
High school graduate or higher	2,037	96.0%	1,218	93.5%	819	100.0%
Bachelor's degree or higher	1,014	47.8%	514	39.4%	500	61.1%
<b>Population 35 to 44 years</b>	<b>2,967</b>		<b>1,498</b>		<b>1,469</b>	
High school graduate or higher	2,944	99.2%	1,487	99.3%	1,457	99.2%
Bachelor's degree or higher	1,644	55.4%	584	39.0%	1,060	72.2%
<b>Population 45 to 64 years</b>	<b>9,759</b>		<b>4,634</b>		<b>5,125</b>	<b>0.0%</b>
High school graduate or higher	9,515	97.5%	4,441	95.8%	5,074	99.0%
Bachelor's degree or higher	5,329	54.6%	2,274	49.1%	3,055	59.6%
<b>Population 65 years and over</b>	<b>4,652</b>		<b>2,053</b>		<b>2,599</b>	
High school graduate or higher	4,322	92.9%	1,872	91.2%	2,450	94.3%
Bachelor's degree or higher	2,021	43.4%	1,034	50.4%	987	38.0%

Source: American Community Survey (ACS), 2020 • Created with Datawrapper



Newtown is home to 6,823 students: 5,048 are enrolled in primary and secondary school, and the remaining students are enrolled in college or graduate school. K-12 enrollment decreased by 17% between 2010 and 2020 and overall school enrollment decreased by 13%. There are about half as many enrolled nursery age children in Newtown in 2020 than there were in 2010, indicating future declines in student population and enrollment.

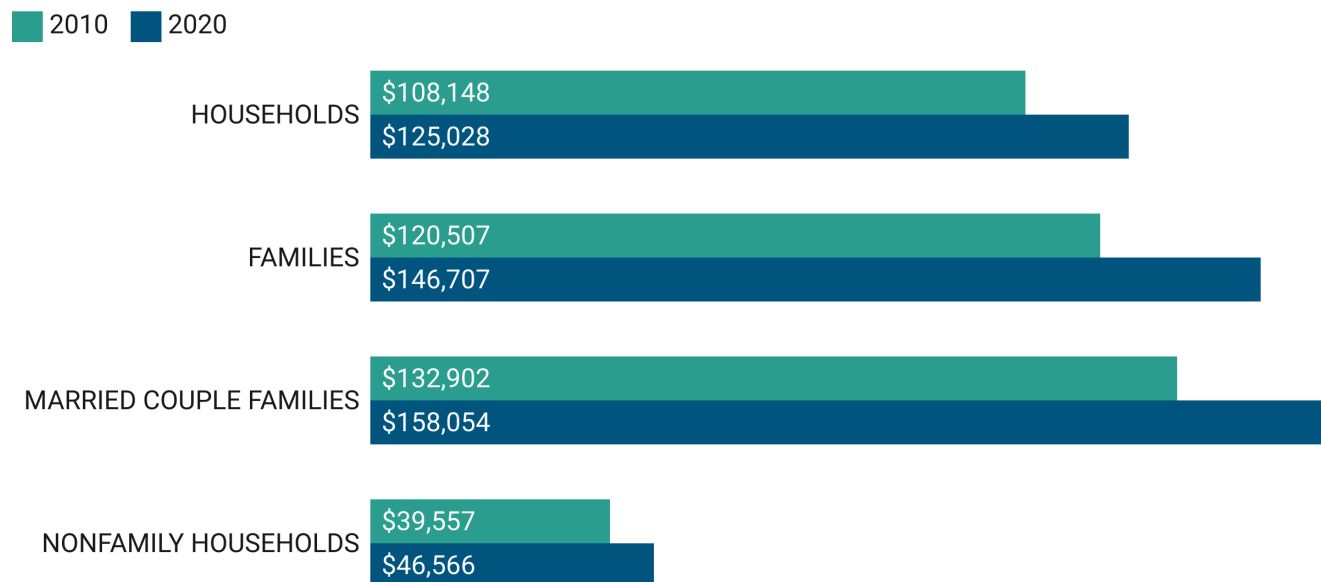
## Newtown School Enrollment, 2010, 2020



Source: American Community Survey (ACS) 2010, 2020 • Created with Datawrapper

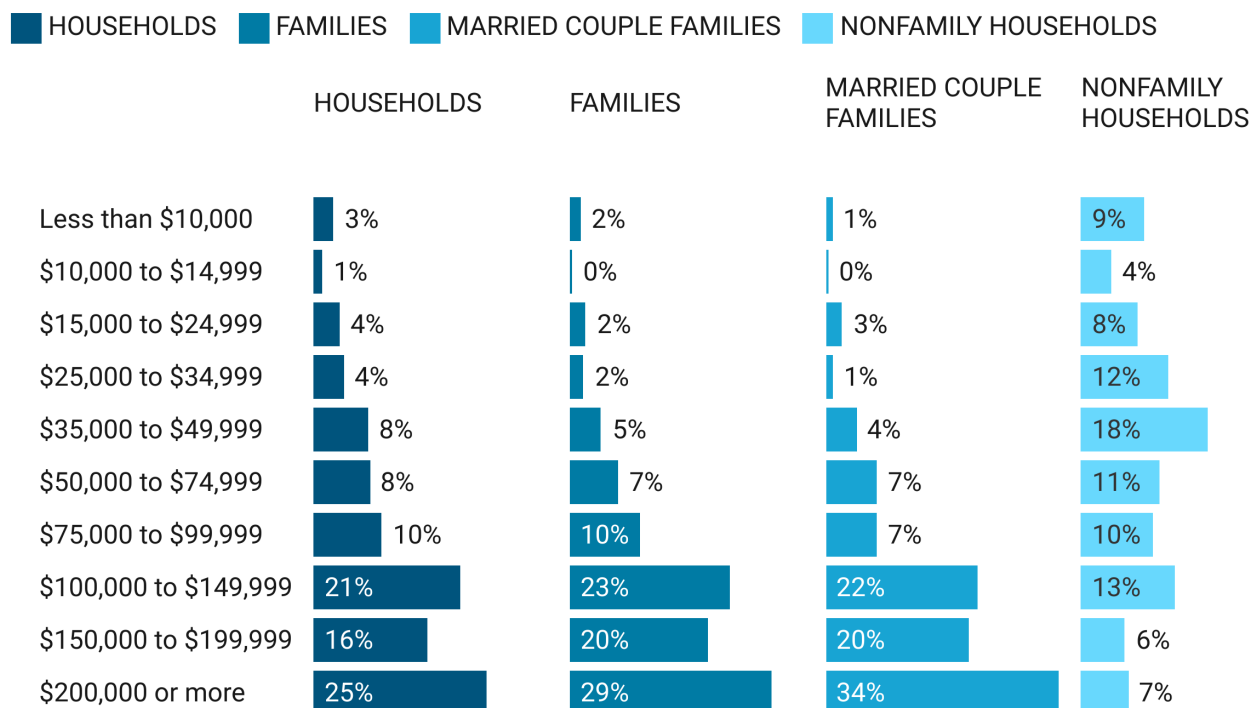
Median income grew across all household types between 2010 and 2020. Families experienced the greatest percentage income growth at 21.7%. Married couple households are the highest earning household type, on average, in Newtown. 34% of married couple households earn more than \$200,000 per year.

## Newtown Median Income, 2010, 2020



Source: American Community Survey (ACS), 2010, 2020 • Created with Datawrapper

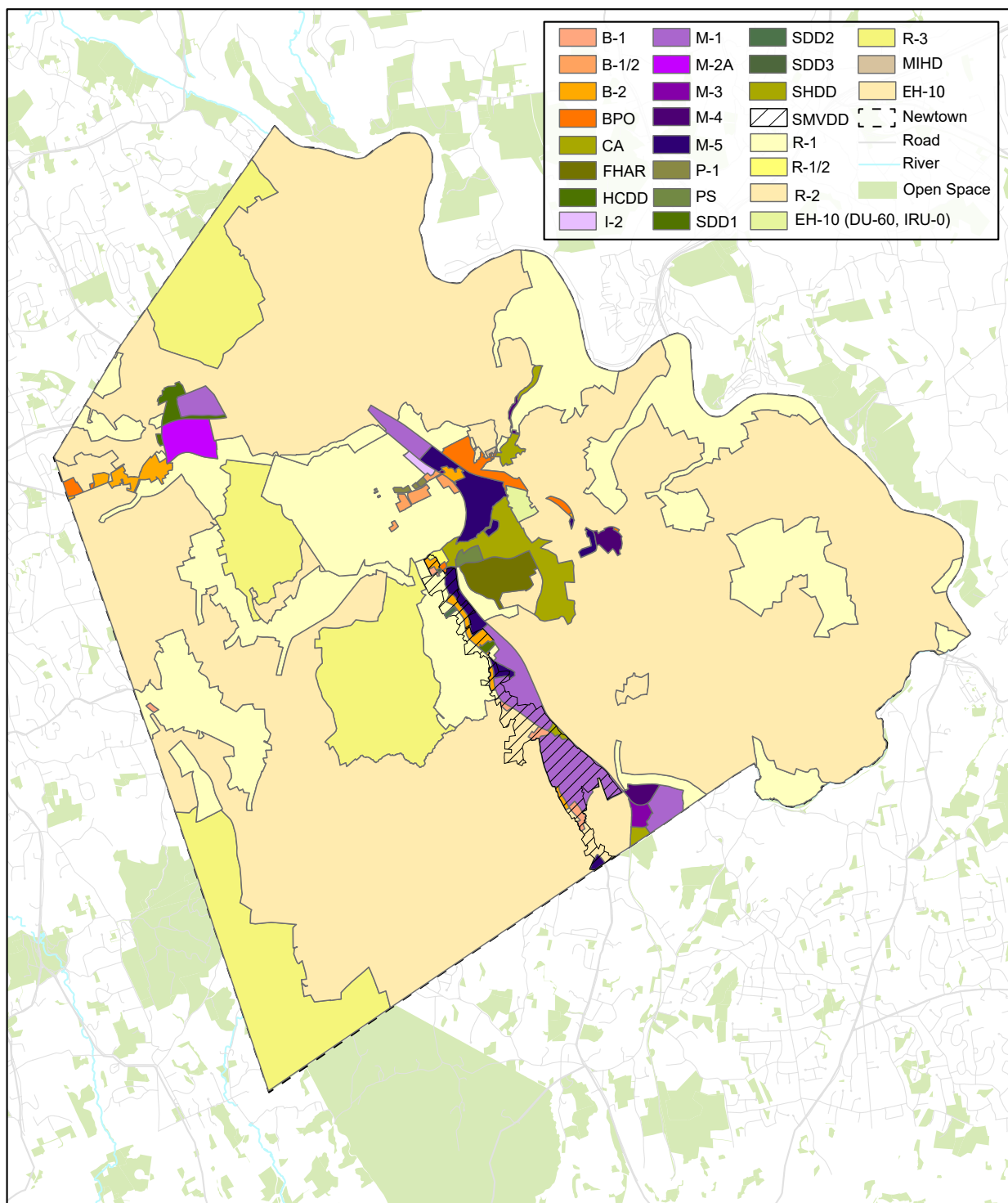
## Newtown Income Distribution, 2020



Source: American Community Survey (ACS), 2020 • Created with Datawrapper

# LAND USE PLACEHOLDER

Newtown occupies about 60 square miles in western Connecticut. About 92% of the Town (approximately 55 square miles) is zoned for residential or farming (R-1, R-1/2, R-2, R-3, MIHD, EH-10). About 3% of Newtown is zoned for manufacturing, 2% is zoned for special districts (e.g., schools, Fairfield Hills), and 1% is zoned for commercial use.



## Newtown Zoning

Sources: WestCOG, US Census Bureau, BFJ Planning



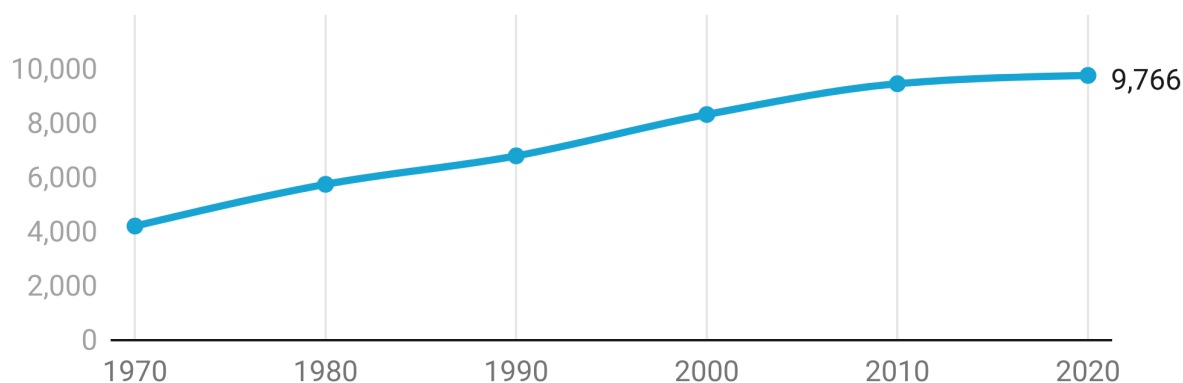
There are 9,766 households in Newtown. The total number of Newtown households increased at a decreasing rate each decade from 1970 to 2020, apart from 2000, where the percentage growth increased from 18.2% (1980-1990) to 22.5% (1990-2000). Most recently, the percentage growth dropped significantly from 13.6% (2000-2010) to 3.2% (2010 – 2020).

## Newtown Households Change, 1970 - 2020

CENSUS YEAR	HOUSEHOLDS	CHANGE FROM PRIOR DECADE	PERCENT CHANGE
1970	4,209		
1980	5,750	1,541	36.6%
1990	6,798	1,048	18.2%
2000	8,325	1,527	22.5%
2010	9,459	1,134	13.6%
2020	9,766	307	3.2%

Source: U.S. Census Bureau • Created with Datawrapper

## Newtown Households Change, 1970 - 2020



Source: U.S. Census Bureau • Created with Datawrapper

Of the 10,322 housing units in Newtown, 94.6% are occupied. Most occupied housing units are owner-occupied (88.6%), which is considerably higher than Fairfield County (63.9%). Renter occupancy in Newtown (11.4%) is much lower than that of Fairfield County (36.1%), emphasizing the suburban character of Newtown. Of the 556 vacant units in Newtown, 181 were for seasonal use, 112 were for sale, and 60 were for rent.

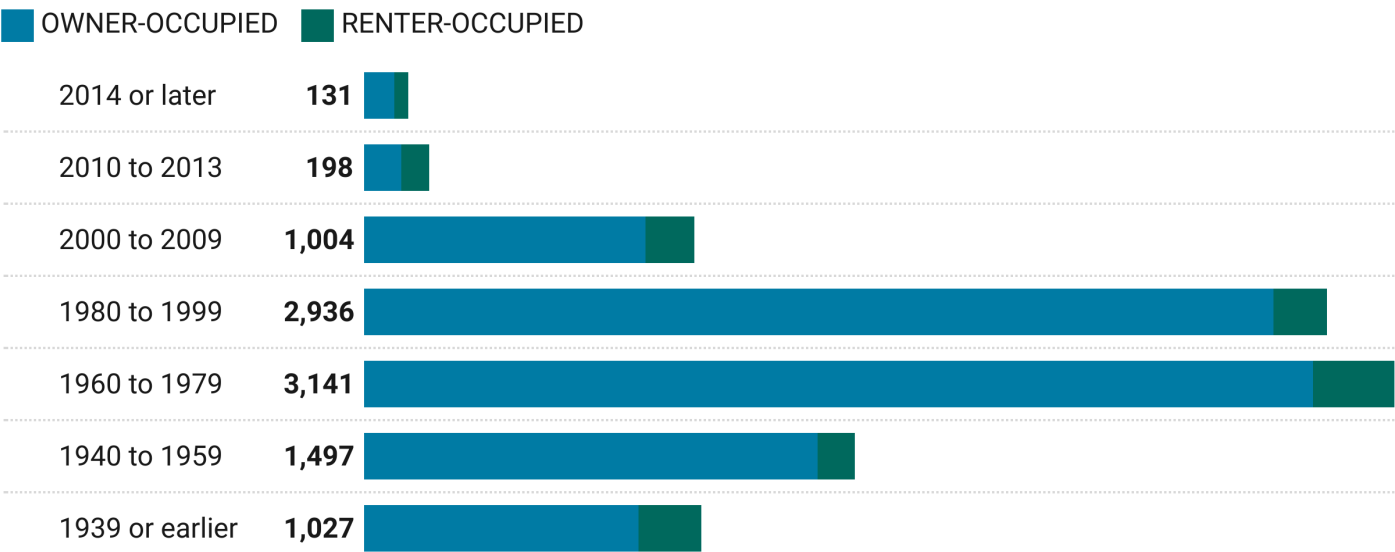
## Occupied Housing Units by Tenure, Newtown and Fairfield County, 2020

FAIRFIELD COUNTY	FAIRFIELD PERCENT OF TOTAL	HOUSING OCCUPANCY	NEWTOWN	NEWTOWN PERCENT OF TOTAL
378,479	100%	Total housing units	10,322	100.0%
354,084	93.6%	Occupied housing units	9,766	94.6%
24,395	6.4%	Vacant housing units	556	5.4%
8,410	2.2%	For rent	60	0.6%
984	0.3%	Rented, not occupied	8	0.1%
3,222	0.9%	For sale only	112	1.1%
1,059	0.3%	Sold, not occupied	23	0.2%
5,086	1.3%	For seasonal, recreational, or occasional use	181	1.8%
5,634	1.5%	All other vacants	172	1.7%
<b>VACANCY RATES</b>				
	1.4%	Homeowner vacancy rate		1.3%
	6.1%	Rental vacancy rate		5.1%
<b>HOUSING TENURE</b>				
354,084	100%	Occupied housing units	9,766	100.0%
226,220	63.9%	Owner-occupied housing units	8,654	88.6%
127,864	36.1%	Renter-occupied housing units	1,112	11.4%

Source: U.S. Census Bureau, Decennial Census 2010-2020 • Created with Datawrapper

Between 1940 and 1979 nearly half (46.7%) of the occupied housing units were built. Housing construction has decreased since 2000, representing only 13% of occupied housing units.

## Newtown Housing Occupancy by Structure Age



Source: American Community Survey, DP04, 2020 • Created with Datawrapper

Most of Newtown's occupied housing units are single-family detached structures. Single-family detached housing units are predominantly owner-occupied (94.3%). About one-half (54.6%) of the 994 renter-occupied units are single-family detached structures. The next largest structure type for renters are structures with 10 or more units (15.5%). The remaining renter-occupied units are in 3- or 4-unit structures (14.2%).

## Occupied Housing Units by Tenure, Newtown and Fairfield County, 2020

FAIRFIELD COUNTY	FAIRFIELD PERCENT OF TOTAL	HOUSING OCCUPANCY	NEWTOWN	NEWTOWN PERCENT OF TOTAL
378,479	100%	<b>Total housing units</b>	10,322	100.0%
354,084	93.6%	Occupied housing units	9,766	94.6%
24,395	6.4%	Vacant housing units	556	5.4%
8,410	2.2%	For rent	60	0.6%
984	0.3%	Rented, not occupied	8	0.1%
3,222	0.9%	For sale only	112	1.1%
1,059	0.3%	Sold, not occupied	23	0.2%
5,086	1.3%	For seasonal, recreational, or occasional use	181	1.8%
5,634	1.5%	All other vacants	172	1.7%
<b>VACANCY RATES</b>				
	1.4%	Homeowner vacancy rate		1.3%
	6.1%	Rental vacancy rate		5.1%
<b>HOUSING TENURE</b>				
354,084	100%	Occupied housing units	9,766	100.0%
226,220	63.9%	Owner-occupied housing units	8,654	88.6%
127,864	36.1%	Renter-occupied housing units	1,112	11.4%

Source: U.S. Census Bureau, Decennial Census 2010-2020 • Created with Datawrapper



The median value of homes decreased by 17.7% between 2010 and 2020. The number of owner-occupied units valued between \$300,000 to \$499,999 grew from 42.6% to 55.2%, where as the number of owner-occupied units valued between \$500,000 and \$999,999 decreased from 40.8% to 23%. About three-quarters of households have a mortgage, and one quarter do not.

## Newtown Housing Value and Sales Price, 2010, 2020

	2010	2020
Owner-occupied units	8,051	8,940
Less than \$50,000	0.6%	1.7%
\$50,000 to \$99,999	1.5%	0.9%
\$100,000 to \$149,999	0.2%	1.0%
\$150,000 to \$199,999	2.5%	2.2%
\$200,000 to \$299,999	8.3%	15.3%
\$300,000 to \$499,999	42.6%	55.2%
\$500,000 to \$999,999	40.8%	23.0%
\$1,000,000 or more	3.6%	0.7%
<i>Median (dollars)</i>	<i>\$473,400</i>	<i>\$389,600</i>
<b>MORTGAGE STATUS</b>		
Owner-occupied units	8,051	8,940
Housing units with a mortgage	79.2%	74.0%
Housing units without a mortgage	20.8%	26.0%

Source: American Community Survey (ACS), 2010, 2020 • Created with Datawrapper

Each housing unit-type increased between 2010 and 2020, except for one-bedroom units, which creased from 710 to 566. The number of households utilizing utility gas increased from 10.6% to 15% between 2010 and 2020. Household reliance on wood fuel doubled between 2010 (208) and 2020 (413). The number of units lacking complete plumbing facilities increased from 17 in 2010 to 47 in 2020. Additionally, the number of units lacking complete kitchen facilities rose from 19 in 2010 to 90 in 2020. Twelve households installed solar over the last decade.

## Newtown Housing Inventory Characteristics, 2010, 2020

BEDROOMS	2010 TOTAL	2010 PERCENT OF TOTAL	2020 TOTAL	2020 PERCENT OF TOTAL
<b>Total housing units</b>	<b>9,450</b>		<b>10,476</b>	
No bedroom	13	0.1%	84	0.8%
1 bedroom	710	7.5%	566	5.4%
2 bedrooms	1,042	11.0%	1,235	11.8%
3 bedrooms	3,660	38.7%	3,835	36.6%
4 bedrooms	3,469	36.7%	4,099	39.1%
5 or more bedrooms	556	5.9%	657	6.3%
<b>HOUSE HEATING FUEL</b>				
Occupied housing units	8,851		9,934	
Utility gas	936	10.6%	1,487	15.0%
Bottled, tank, or LP gas	449	5.1%	737	7.4%
Electricity	575	6.5%	716	7.2%
Fuel oil, kerosene, etc.	6,660	75.2%	6,486	65.3%
Coal or coke	-	-	-	-
Wood	208	2.4%	413	4.2%
Solar energy	-	-	12	0.1%
Other fuel	23	0.3%	75	0.8%
No fuel used	-	-	8	0.1%
<b>SELECTED CHARACTERISTICS</b>				
Occupied housing units	8,851		9,934	
Lacking complete plumbing facilities	17	0.2%	47	0.5%
Lacking complete kitchen facilities	19	0.2%	90	0.9%
No telephone service available	57	0.6%	70	0.7%

Source: American Community Survey, DP04, 2010 and 2020 • Created with Datawrapper

63.7% of Newtown households are married couple households, compared to Fairfield County where 50.6% of households are married couple households. The number of Newtown female householders with no partner present is 1,879 (19.2%), including 1,119 who live alone. About one-third of Newtown households have children and one third have individuals older the age of 65. The number of female single parent households in Newtown is 297, which is about twice as many as male single-parent households (125).

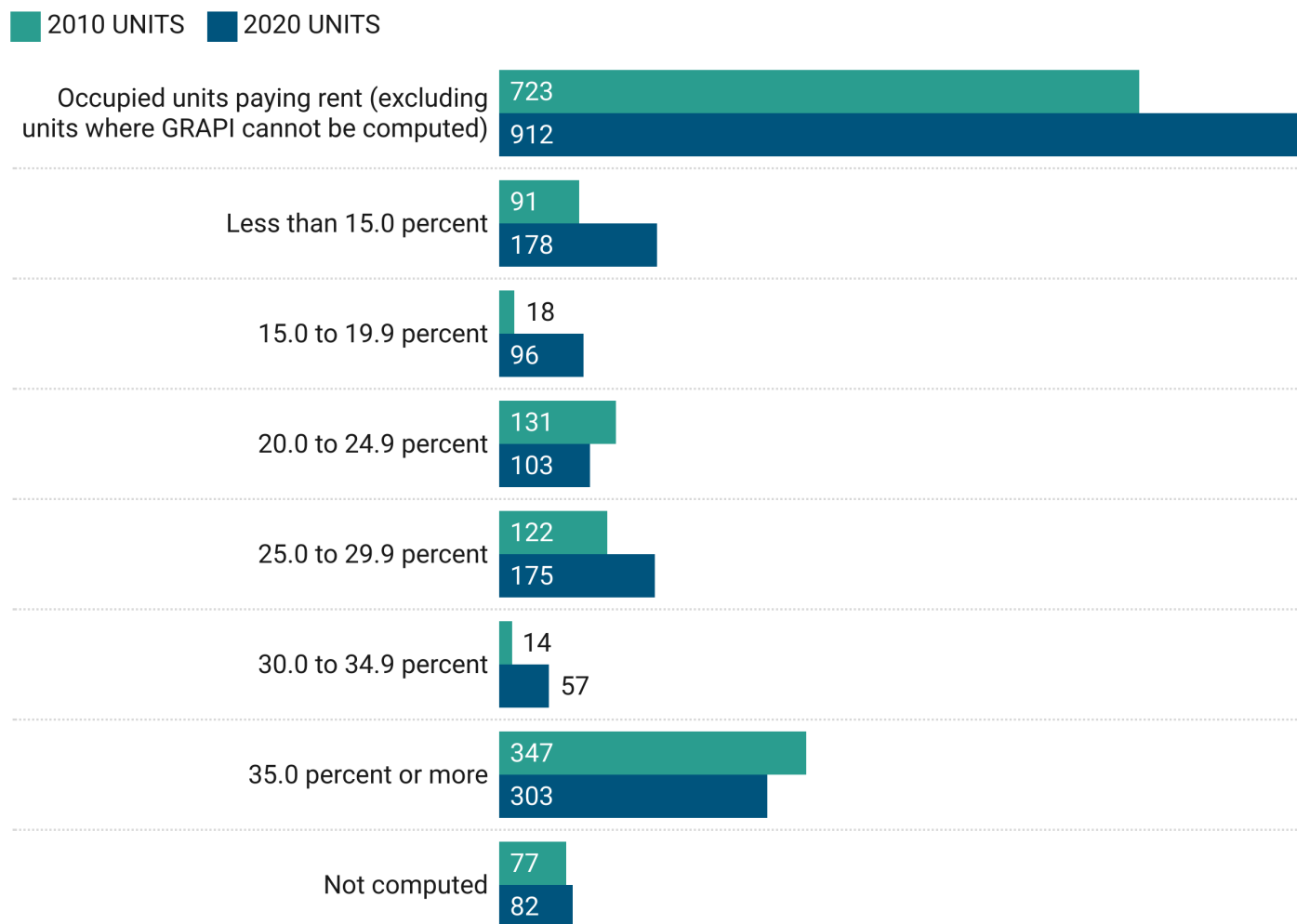
## Housing Composition, Newtown & Fairfield County, 2020

	FAIRFIELD COUNTY		NEWTOWN	
HOUSEHOLDS BY TYPE	TOTAL	PERCENT OF FAIRFIELD TOTAL	TOTAL	PERCENT OF NEWTOWN TOTAL
<b>Total households</b>	<b>354,084</b>	<b>100.0%</b>	<b>9,766</b>	<b>100.0%</b>
<i>Married couple household:</i>	<i>179,031</i>	<i>50.6%</i>	<i>6,218</i>	<i>63.7%</i>
With own children under 18 [3]	78,111	22.1%	2,559	26.2%
Cohabiting couple household	20,595	5.8%	496	5.1%
With own children under 18 [3]	6,482	1.8%	122	1.2%
<i>Male householder, no spouse or partner present:</i>	<i>56,897</i>	<i>16.1%</i>	<i>1,173</i>	<i>12.0%</i>
Living alone	37,339	10.5%	757	7.8%
65 years and over	12,073	3.4%	292	3.0%
With own children under 18 [3]	4,944	1.4%	125	1.3%
<i>Female householder, no spouse or partner present:</i>	<i>97,561</i>	<i>27.6%</i>	<i>1,879</i>	<i>19.2%</i>
Living alone	51,774	14.6%	1,119	11.5%
65 years and over	27,279	7.7%	756	7.7%
With own children under 18 [3]	18,571	5.2%	297	3.0%
<i>Households with individuals under 18 years</i>	<i>118,322</i>	<i>33.4%</i>	<i>3,320</i>	<i>34.0%</i>
<i>Households with individuals 65 years and over</i>	<i>110,386</i>	<i>31.2%</i>	<i>3,371</i>	<i>34.5%</i>

Source: U.S. Census Bureau, Decennial Census 2010-2020 • Created with Datawrapper

The proportion of renters who spent 30% or more of their income to gross rent decreased by about 10% between 2010 (49.9%) and 2020 (39.5%). Renters who paid less than 20% of income to gross rent increased to 30% in 2020 from 15.1% in 2010. Renters who spent 20% to 29.9% of income on gross rent decreased from 35% in 2010 to 30.5% in 2020.

## Newtown Household Income Percentage Spent on Gross Rent, 2010, 2020



GRAPI: GROSS RENT AS A PERCENTAGE OF HOUSEHOLD INCOME

Source: American Community Survey, 2010 and 2020 • Created with Datawrapper

Monthly housing costs decreased slightly for owners with mortgages. Monthly housing costs for owners with no mortgage increased. Median gross rent increased by 40% from 2010 to 2020. While there were 189 more renters in 2020 than in 2010, there were 889 more owners in 2020 than 2010.

## Newtown Affordability and Housing, 2010, 2020

SELECTED MONTHLY OWNER COSTS (SMOC)	2010 UNITS	PERCENT OF 2010 UNITS	2020 UNITS	PERCENT OF 2020 UNITS
<b>Housing units with a mortgage</b>	<b>6,373</b>		<b>6,615</b>	
Less than \$500	20	0.2%	-	-
\$500 to \$999	184	2.9%	74	1.1%
\$1,000 to \$1,499	437	6.9%	518	7.8%
\$1,500 to \$1,999	757	11.9%	853	12.9%
\$2,000 or more	4,975	78.1%	5,170	78.1%
Median (dollars)	\$2,852		\$2,712	
<b>SELECTED MONTHLY OWNER COSTS (SMOC)</b>				
<b>Housing units without a mortgage</b>	<b>1,678</b>		<b>2,325</b>	
Less than \$399	91	5.4%	36	1.5%
\$400 or more	1,587	94.6%	2,289	98.5%
Median (dollars)	\$961		\$1,119	
<b>GROSS RENT</b>				
<b>Occupied units paying rent</b>	<b>723</b>		<b>912</b>	
Less than \$500	96	13.3%	82	9.0%
\$500 to \$999	190	26.3%	114	12.5%
\$1,000 to \$1,499	266	36.8%	252	27.6%
\$1,500 or more	171	23.7%	464	50.9%
Median (dollars)	\$1,095		\$1,517	
No rent paid	77		82	

Source: American Community Survey, DP04, 2010 & 2020 • Created with Datawrapper

The proportion of homeowners with a mortgage who spent 30% or more of their income on housing decreased from 38.2% in 2010 to 31.3% in 2020. Homeowners with a mortgage who paid less than 20% of income on housing increased to 36.4% in 2020 from 29% in 2010. The number of homeowners without mortgages increased by about 35% between 2010 (1,678) and 2020 (2,399).

## Newtown Household Income Spent on Housing, 2010, 2020

	2010 TOTAL	PERCENT OF 2010 TOTAL	2020 TOTAL	PERCENT OF 2020 TOTAL
<b>Housing units with a mortgage</b>	<b>6,373</b>		<b>6,598</b>	
Less than 20.0 percent	1,848	29.0%	2,399	36.4%
20.0 to 24.9 percent	1,160	18.2%	1,150	17.4%
25.0 to 29.9 percent	926	14.5%	984	14.9%
30.0 to 34.9 percent	538	8.4%	378	5.7%
35.0 percent or more	1,901	29.8%	1,687	25.6%
Not computed	-		17	
<b>Housing unit without a mortgage</b>	<b>1,678</b>		<b>2,270</b>	
Less than 10.0 percent	314	18.7%	716	31.5%
10.0 to 14.9 percent	331	19.7%	465	20.5%
15.0 to 19.9 percent	260	15.5%	244	10.7%
20.0 to 24.9 percent	258	15.4%	292	12.9%
25.0 to 29.9 percent	43	2.6%	91	4.0%
30.0 to 34.9 percent	102	6.1%	112	4.9%
35.0 percent or more	370	22.1%	350	15.4%
Not computed	-		55	

*Excluding units where SMOCAP cannot be computed*

Source: American Community Survey, 2010 and 2020 • Created with Datawrapper

