



**Sandy Hook Permanent Memorial Commission
Newtown Municipal Center, Council Chamber
3 Primrose Street, Newtown, CT**

**THESE MINUTES ARE SUBJECT TO APPROVAL BY THE PERMANENT MEMORIAL
COMMISSION**

The Sandy Hook Permanent Memorial Commission held a regular meeting on Thursday, April 11, 2019 at the Newtown Municipal Center, Council Chamber, 3 Primrose Street, Newtown. Dan Krauss called the meeting to order at 7:08pm and began with a moment of silence.

PRESENT: Dan Krauss, JoAnn Bacon, Brian Engel, Sarah Middeleer, Alan Martin, Agni Pavilidou Kyprianou, Tricia Pinto

ABSENT: Joanne Brunetti, Pat Llodra, Donna Van Waalwijk

ALSO PRESENT: First Selectman Dan Rosenthal, two members of the public and one member of the press.

ACCEPTANCE OF MINUTES: A. Martin moved to accept the minutes of January 10, 2019.
T. Pinto seconded. All in favor.

PUBLIC PARTICIPATION: It was noted that two scouts were in attendance as part of their merit badge.

ACCEPTANCE OF DATES FOR MEETINGS IN 2019: A. Martin moved to accept the January 10, 2019 meeting minutes. T. Pinto seconded. All in favor.

DISCUSSION OF REVIESED DESIGN OPTIONS: First Selectman Rosenthal stated he informed SWA that there is a \$4 million target for the memorial in the CIP, which has not gone to a public vote, and asked them, with that number in mind, to come up with some options. He asked them to maintain the central element of the design. The changes in the slope at the site create a challenge and drive costs. The original design was \$10-12 million.

A. Martin believes there are elements to keep as well as forgo. He thinks keeping a bridge is important to the entire project and wants to know the cost of proposed reductions.

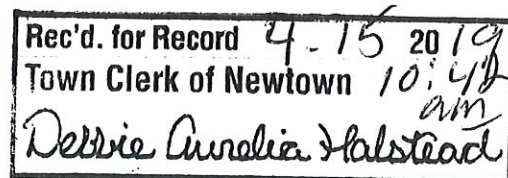
S. Middeleer believes the chosen design was extraordinary and doesn't want to compromise the integrity of the design and the main component. There is wealth in the state and the commission hasn't attempted to fundraise. The bridges completed the idea. A spreadsheet of SWA costs would be very helpful to commission to help in trying to maintain the integrity of the design.

A. Pavilidou Kyprianou said she voted on the design for the pond with the sycamore tree and for the walk over the water. She wants to know from the architect how the bridge can be kept.

D. Krauss suggested having the commission submit their questions to him to compile and send to SWA. At the next meeting SWA can be included via phone to answer the questions.

D. Rosenthal stated if a budget had been set early on the challenge would've been to individually validate the stated cost and the commission would've chosen a design based on price rather than what spoke to them.

T. Pinto noted that none of the three options have a bridge over the water and questioned if it was feasible.



J. Bacon feels the three options are not what was voted on. The water feature is intact but the intricate walk ways, which were symbolic, are non-existent. The option without the bridge doesn't have the impact and she feels the design has been reduced too much. There was discussion on the pavilion, possibly removing that and restoring a bridge. J. Bacon also inquired on the savings involved in having cheaper security fencing. Additionally, she asked if anyone has reached out to local resources.

S. Middeleer thinks that the time to approach those who offered services or materials is once there is a final design.

A phased project is disrespectful; having construction while people are visiting to pay respects is not an option. Plantings can be added later but not structures.

B. Engel thinks the options are very helpful. He was concerned about this design budget during the process but noted not setting a budget was done purposely. He asked if there was environmental aid, either state or federal, to aid in the clean up of the ponds.

D. Rosenthal will reach out to SWA for a spreadsheet of costs. The commission members will send questions to D. Krauss to be forwarded to SWA. SWA will participate via phone at the next meeting on May 9.

ADJOURNMENT: The regular meeting of the Sandy Hook Permanent Memorial Commission was adjourned at 7:54 p.m.

Att.: Revised options for design

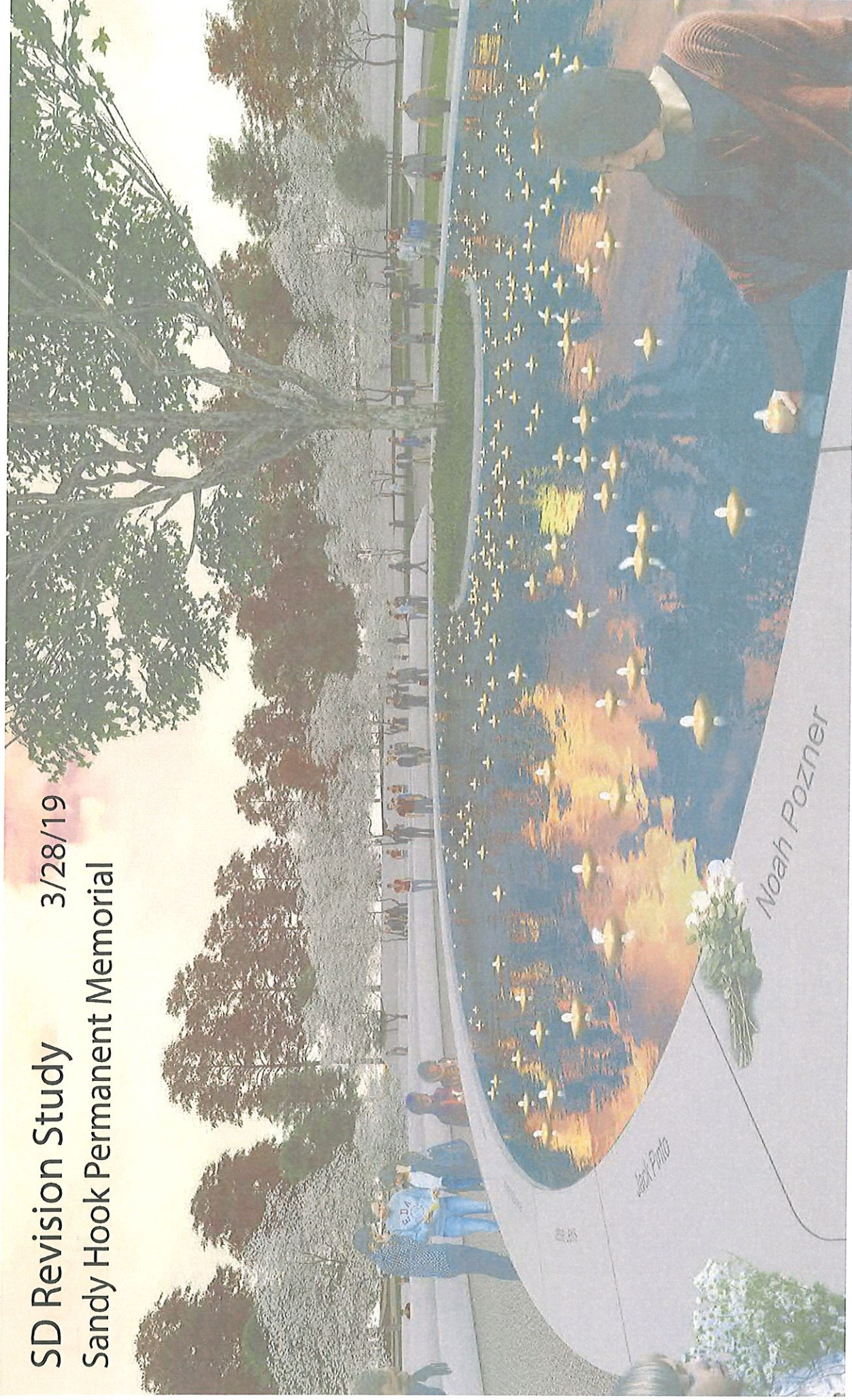
Respectfully submitted,

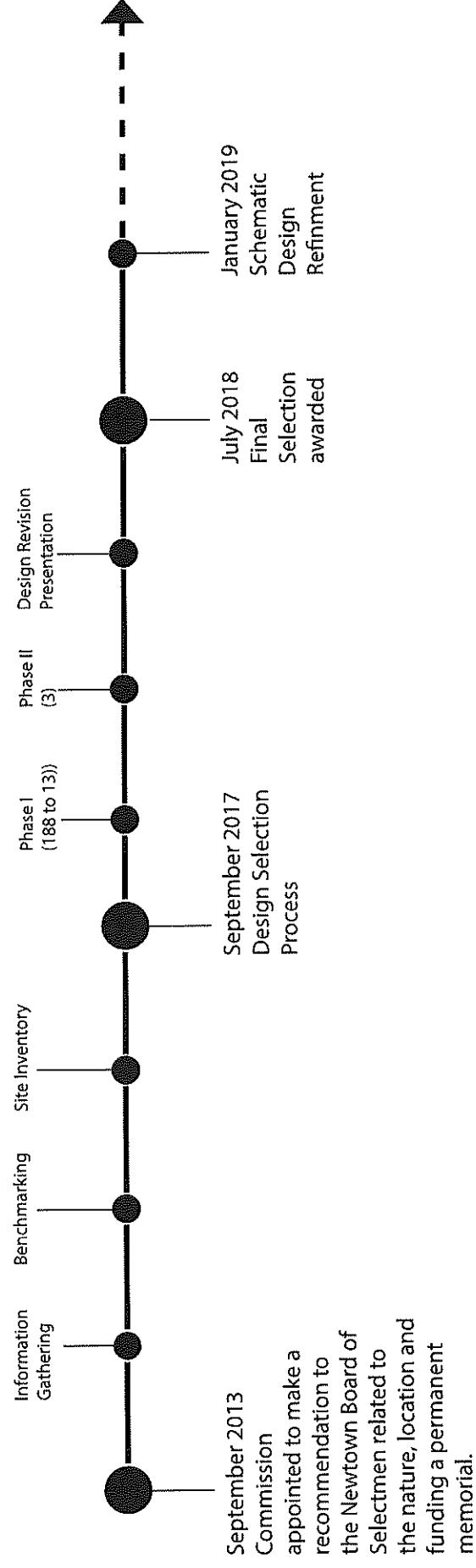
Sue Marcinek, clerk

SD Revision Study

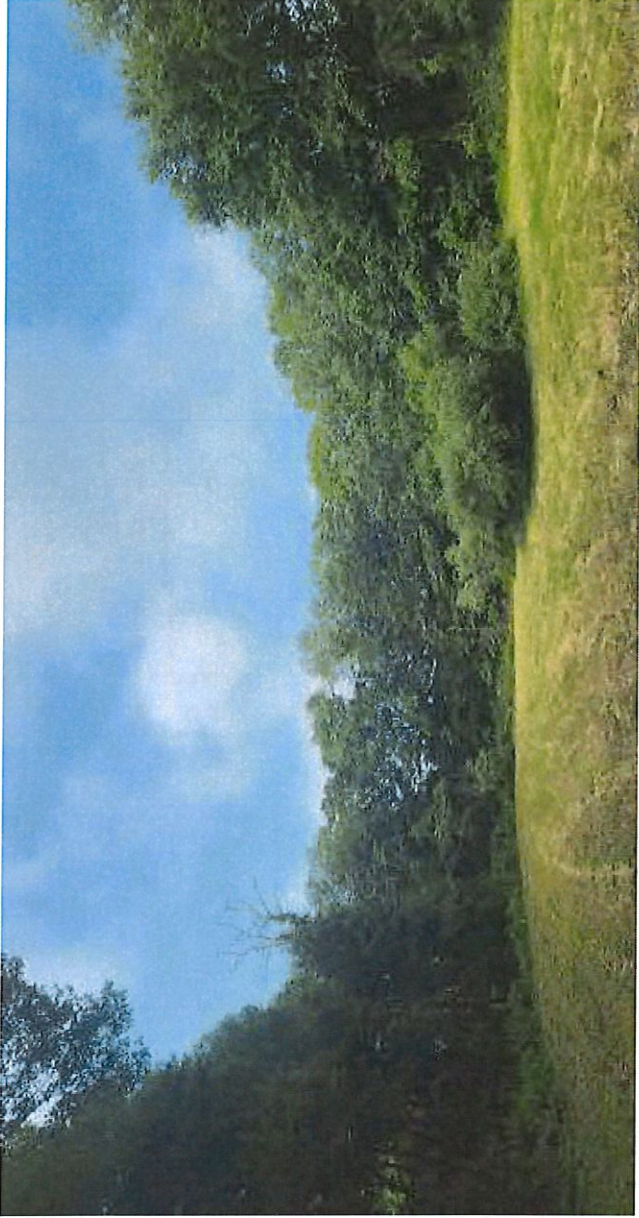
3/28/19

Sandy Hook Permanent Memorial

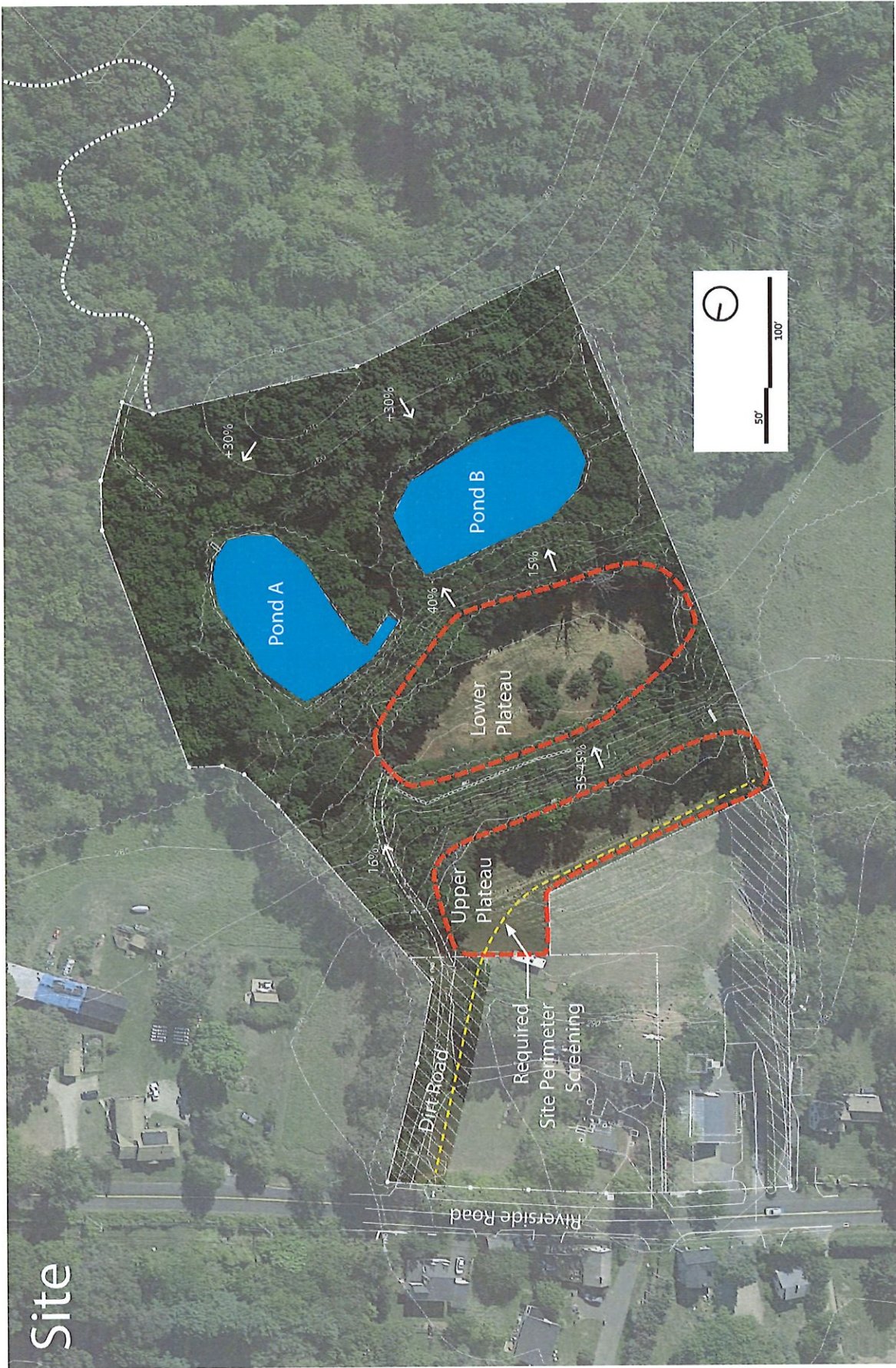




Timeline



Site Selection



Site

Commission Selection SH37 Finalist

Family Feedback:

- "Good use of foliage in all four seasons"
- "Enjoy the simplicity of the names around the outside of the fountain"
- "I like the circular nature and symbolism provided through this design"
- "Love the reflection pond with candles"
- "It's park-like, but not a park"
- "Like the circular walking path -there is no end"
- "Appreciate the dedication the individual families"
- "I love the sycamore tree"



Schematic Design

Description:

- Remove Overlook
- Simplified Path Network
- Preserve 2 ponds
- 75% Wall Reduction
- Signage Element
- Security Gate and Fence
- Site Lighting

What the Commission liked: (7/30)

- "core concept of the sycamore tree,"
- "the way in which the names were presented"
- "the simplicity of the design"
- "a true memorial element with complete use of land"
- "calming"
- "a New England feel that fits well in Newtown"



Fundamental Elements

-Memorial Water Feature

-Sacred Sycamore

-Seasonal Planting

-Road Access/Parking

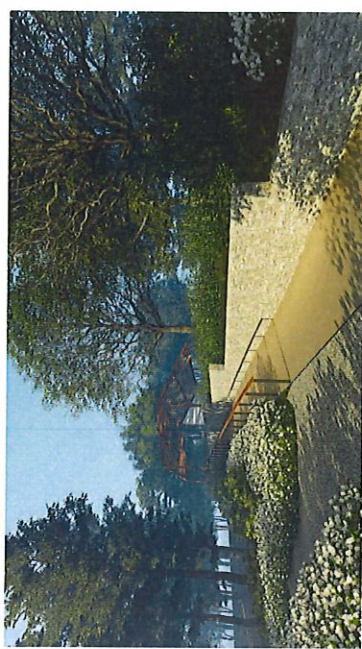
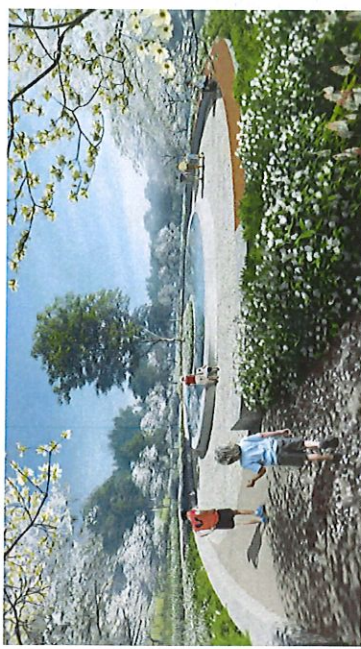
-ADA Pathways

-Security Fence

-Site Screening

-Lighting

-Mock Up



Schematic Revision Option 1

Cost: \$5 million*

Description:

- Remove Bridges
- Switch from NaturalPave to Asphalt
- Reduced Pond Treatment
- Reduced Path Network
- Reduced Planting
- Remove Benches
- Grading Reduction
- Reduced planting/irrigation
- Simplified lighting plan

*opinion of cost includes
18% Contingency and design fees



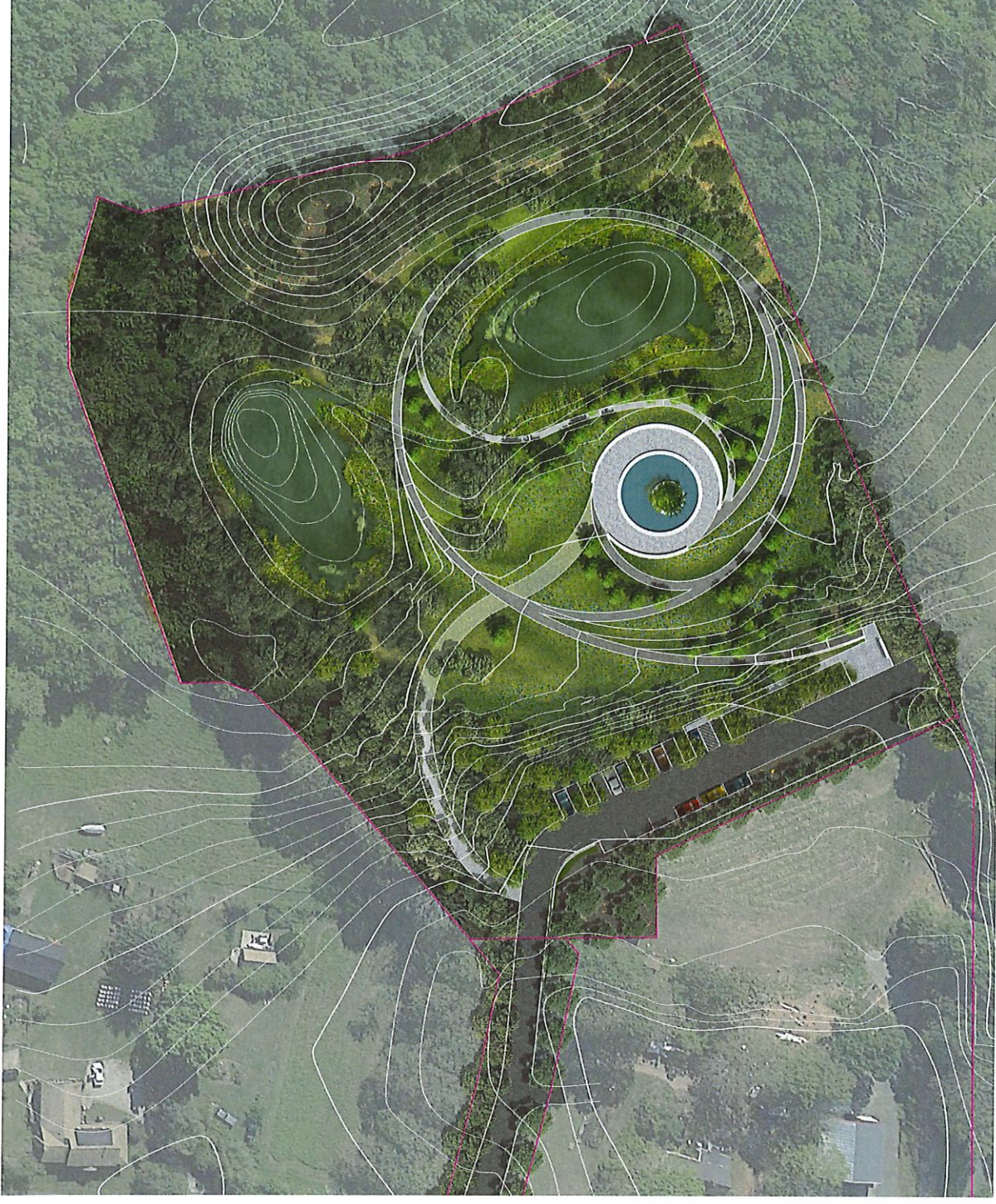
Schematic Revision Option 2

Cost: \$4 million*

Description:

- Switch from Stone to Concrete
- Remove Pavilion
- Remove Treatment of Ponds
- Reduced Trees and Planting
- Cheaper security fencing (no anti-climb)

*opinion of cost includes
18% Contingency and design fees



Schematic Revision Option 3

Cost: \$3.3 million*

Description:

- Remove site circulation beyond memorial feature access
- Reduced extent of security fencing
- Steeper Path (more handrails)
- Slightly reduced Memorial Feature size

*opinion of cost includes
18% Contingency and design fees



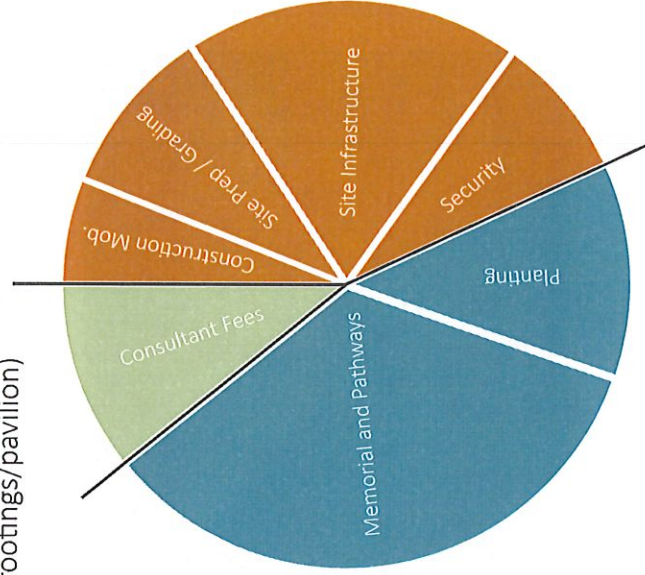
Cost Breakdown

FEE: 11%

- SWA - Site Design + Consultant Coordination
- Sherwood - Civil Engineering + Permit Coordination
- Fluidity - Water Feature Design and Engineering
- Atelier 10 - Lighting
- Stantec - Structural Engineering (walls/footings/pavilion)

Memorial / User Experience: 45%

- Memorial Clearing + Fountain
- Pedestrian Circulation
- Seatwalls
- Pavilion (Optional)
- New Planting / Trees

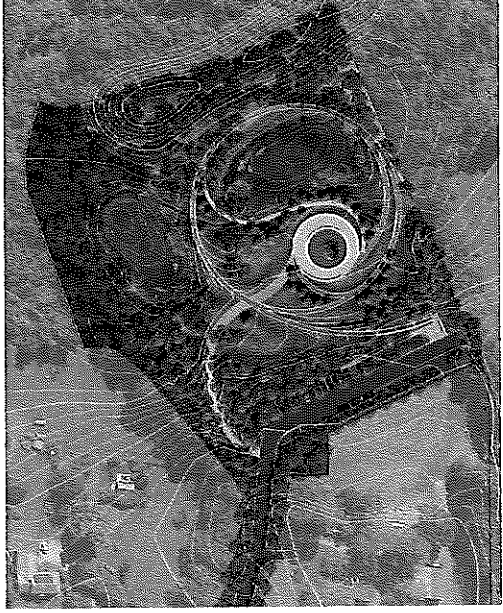


Site Infrastructure: 44%

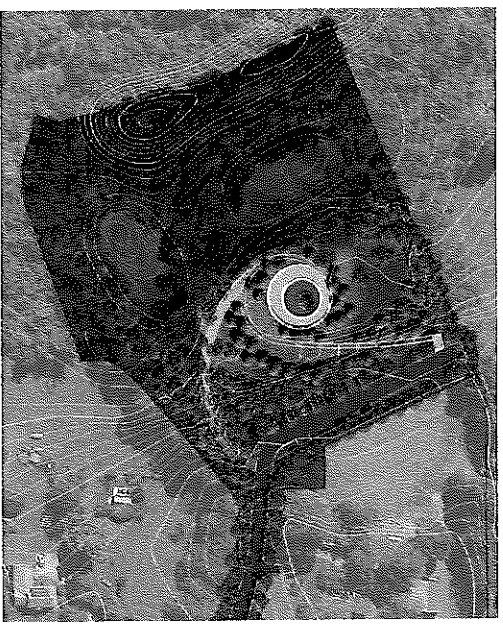
- Construction Mobilization
- Site Preparation / Restoration
- Grading
- Infrastructure / Utilities
- Security / Lighting



Option 1



Option 2



Option 3