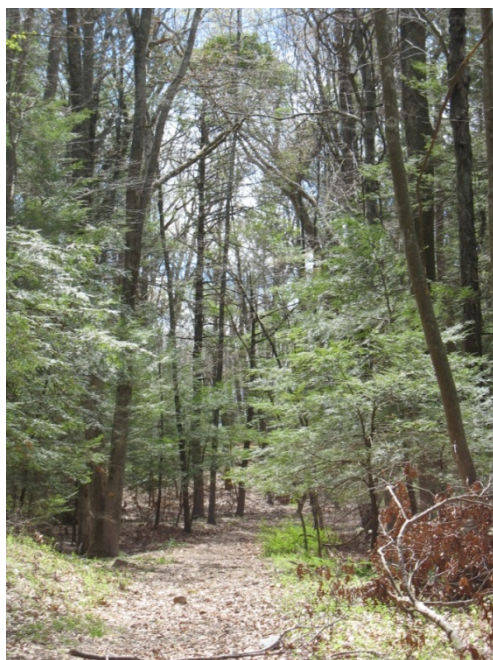


Pole Bridge Preserve



34 Pole Bridge Road
Newtown, CT

Geologic Features

Glacial till soils, rock outcroppings, wetlands, streams, vernal pools, charcoal mounds, forests and meadows are part of this preserve. It sits within the Housatonic River Watershed and is located less than one mile from Lake Zoar. More than 80% of the property drains directly into Pole Bridge Brook, a Class "A" rated watercourse.



Trees and Vegetation

A variety of hardwood and softwood forests are noted in this preserve (Hemlock, Black, Red and White Oak, Black Birch, White Ash, Hickory, Sugar Maple, Red Maple, Bigtooth Aspen, and Black Cherry). The diverse understory includes tree seedlings, hay-scented ferns, arrow wood, green briar, and several invasive species.



Wildlife

Wildlife includes mammals (fox, coyote, white tail deer, skunks and rabbits), birds (red-shouldered hawks and other raptors, short-eared owls, savannah sparrow, chickadee, cardinal, tufted titmouse, northern flicker and junco) as well as eastern box turtle, salamanders and native brook trout.

Conservation Significance

In addition to providing habitat for wildlife, plants and birds, the preserve provides recreational opportunities for residents. With an additional 70+ acres of open space nearby, the property has the potential to be part of a larger greenway/trail system with future links to Connecticut's Upper & Lower Paugussett State Forests.

History and Acquisition

Purchased in 2002, Pole Bridge was a prioritized parcel obtained under Newtown's Open Space Acquisition Program. The preserve now consists of over 54 acres. This land has a history of multiple uses such as agriculture, poultry and cattle farming, mineral and fossil prospecting, charcoal production, and firewood harvesting.

The preserve's dedication was held on May 31, 2003. It includes: 34 Pole Bridge Rd (20.9 acres) purchased by the Town with help of a 50% matching grant from the State. The purchase was supported by the Town, the Open Space Task Force and the Trust for Public Lands; 52 Pole Bridge Rd (22 acres) obtained by the Town as part of the Fox Hollow Lane development in 1979; 15 Bristle Lane (4.8 acres) and a 3.8 acre parcel off Jeremiah were obtained by the Town as part of the Feather Meadow subdivision in 1987/ 1989.

Public Access Information

The best way to access the preserve is to walk up the old woods road off Pole Bridge Road. There are also neighborhood accesses (a marked narrow right-of-way easements off Fox Hollow and Bristle Lane cul-de-sacs, and a pedestrian easement off Brandywine Lane). *Please be sure to respect homeowners' property lines.*



Contact Information

Newtown Conservation Commission
Land Use Agency, 3 Primrose Street
Newtown CT 06470
203-270-4276

Map on back: Trails shown in Red and Preserve
Borders in Light Blue