



My Newtown Ranger Handbook

This Book belongs to

Nature is a wonderful place to explore and enjoy! Here are the pages you need to complete to earn your Newtown Ranger Badge.

Look for the symbol on the pages and find the ones you have to complete the pages that match your age range-or more if you would like.



Forest
All



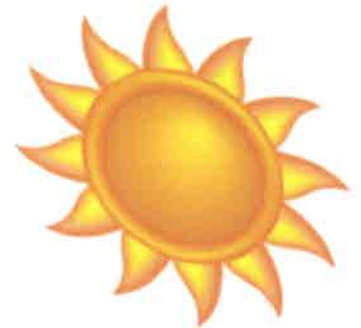
Sapling
4-7



Squirrel
8-12



Fox
13+



Take only pictures
Leave only footprints

Remember to
clean up your
trash and to
recycle

Remember to
stay on the trail
at all times





When going on a hike, you should know what to pack. Circle and color what **to bring** and X what **not to bring** on your hike. Remember you don't want your pack to be too heavy! If you don't know what to choose think - is this item necessary or do I just want this item?





My Newtown Trails Journal

Use this page to describe some of your Newtown Trail experiences.

Find a quiet place you like and write down everything you see and hear.

Where are you? Why do you like this place?

What is the weather?

Is this your first time here or have you been here before?

Many artists use nature as inspiration for their work. Draw a picture or write a short story or poem about where you are on the Newtown trails.



Do you have a favorite animal? Do you have a favorite plant? If not, look outside-do you see something in the wild that interests you? Find your favorite thing in nature and draw it here!

ENJOY THE OUTDOORS IN NEWTOWN

n s i n h p r k m n y k b o o h j v e g
g h a w s f a u r r a b v s t z z x r q
i b e o l e u u r a x t r e r s s o o b
e x t t a m a e g b p f u k o v v h q w
b f d w s y h q z u i a x r r e r q f t
a m k e g c e v r e s e r p e k p l e u
l a g n f i h y d a y s t h s r r p z p
c h k c m m a b f h k a e k c o v i j n
m x m z c k d z l a m w i t i m d t m z
y r s k l c e g t t s v f m t f m r w d
v d o q o p k y i t i l p l b f k r o l
a m r m u t d h c e j x d a e d v h u e
f u m a v h o r l r c h l l i a r t g t
i r t w h l i r y t z f w j c d r n g h
c q q e c c s q u o n e t t l e t o w n
e j n o q b r b c w f o r e s t h d v x
n g m y k l j o w n i d g t k x d r b u
t b z o b w v h m f g v v o h w q s m o
e z o g m s f k a g h b s n r o e f k b
r b c t t g w n b m z a l b b n y w a s



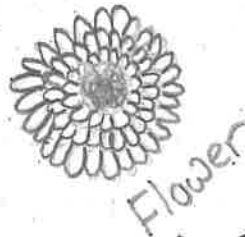
- : Find at least 5 words
- : Find at least 10 words
- : Find all words

als
center
cherry
forest
grove

hattertown
holcombe
nature
nettletown
newtown

orchard
park
paugussett
preserve
trail

Hidden Beauty in Nature



Find these hidden pictures! Then color in the scene! (These are not the actual size in the picture)



With a parent!

Treasure Hunt!

Geocaching in Newtown

Geocaching is like hide and go-seek in the outdoors. People have hidden treasures for you to find by using coordinates to help you locate them. By using a mobile device or Global Positioning System (GPS), hikers can find the cache! Now it's your turn! You can use websites like geocaching.com to get started!

Find a cache located in Newtown. Write down the coordinate here:

_____ What
cache did you find:

Sometimes, hikers swap caches. For example, if you take a cache, you leave a cache. Did you leave anything behind for others to find? If so, what did you leave?

Newtown Open Spaces, Trails, Protected Land, and Parks



- Check off all the Open Spaces, Trails, Protected Land and Parks you have been to in Newtown!
- This is not an exhaustive list, so if you visit a trail, park or forest, etc.that is not on this list, fill it in at the bottom.
- Visit at least one!!

___ Deep Brook Preserve

___ Halfway River

___ High Meadow (Fairfield Hills Loop Trail)

___ Pole Bridge Preserve

___ Stone Bridge Preserve

___ Dickinson Park

___ Barb's Trail

___ Fairfield Hills Loop

___ Orchard Hill Nature Center

___ Brunot Preserve

___ Cavanaugh Pond

___ Fosdick Preserve

___ Hattertown Pond Preserve

___ Greenleaf Preserve

___ Holcomb Preserve and Memorial Trails

___ Nettleton Preserve

___ Newtown Forest

___ The Glen

___ Wassermann Preserve

___ Knotts Preserve

___ Paul. A. Cullens Preserve

___ 196 Hattertown

___ Cherry Grove Farm Preserve

___ Upper Paugusett State Forest

___ Lower Paugusett State Forest

___ Rocky Glen State Park

___ Centennial Watershed State Forest

___ Huntington State Park (enter through Bethel)



Thank you for participating and getting outdoors in Newtown! We hope you enjoyed all that the Newtown trails have to offer!

Write your own pledge about what you can do to protect our trails and outdoors in Newtown.

Words you can use include:

Protect	Conserve	Nature	Respect	Explore	Teach	Discover
---------	----------	--------	---------	---------	-------	----------

_____ has successfully completed this booklet on _____.
(name) (date)

(parent signature)

We would like to thank the following organizations for supporting this booklet and making it possible:

The Newtown Forest Association
CH Booth Library
The Newtown Bikes and Trails Committee

This booklet was created by Jillian H. and Ashley G. for their Girl Scout Silver Award project. If you have any questions, please contact newtowntroop50127@gmail.com